



**ADIXEN BY ALCATEL
ACP 28 Dry Roughing Pump**

TECHNICAL DATA

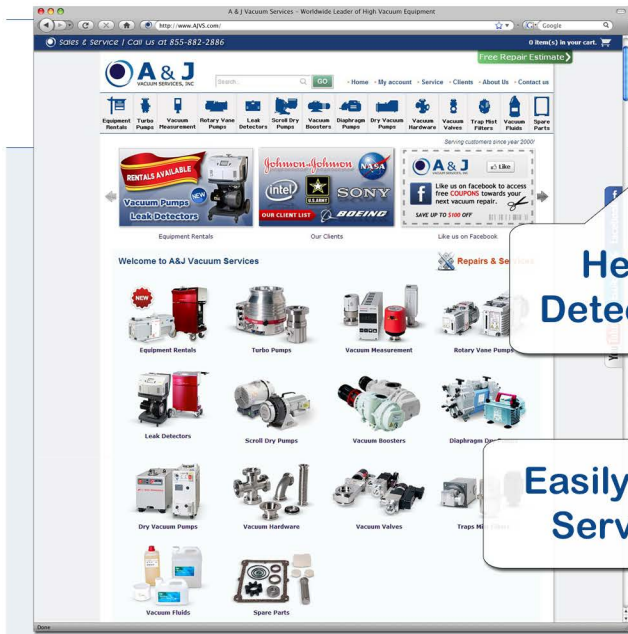
- PUMPING SPEED: 27 M³/H
- MAX INLET PRESSURE: 1013 MBAR
- INLET PORT: DN 25 ISO KF
- EXHAUST PORT: DN 25 ISO KF
- POWER CONSUMPTION: 700 W
- INPUT VOLTAGE: 90-254 V - 50/60 HZ
- WEIGHT: 33.5 KG

 **We Can Rebuild & Service your ACP 28 Dry Roughing Pump**



A & J
VACUUM SERVICES, INC

**ADIXEN / ALCATEL
ACP 28 Compact Dry Roughing Pump**
SALES & SERVICE 1-973-249-0854



www.AJVS.com

**Free Repair Estimate
on all Major Brands**

Open 24-7

**Easily Generate
Service RMA**

**Large Selection of New
and Refurbished High
Vacuum Equipment**