



OPERATING INSTRUCTIONS

EN

Translation of the Original

DUOVANE 6 | 12 | 18 | 22

Rotary vane pump

Dear Customer,

Thank you for choosing a Pfeiffer Vacuum product. Your new rotary vane pump is designed to support you by its performance, its perfect operation and without interfering your individual application. The name Pfeiffer Vacuum stands for high-quality vacuum technology, a comprehensive and complete range of top-quality products and first-class service. With this expertise, we have acquired a multitude of skills contributing to an efficient and secure implementation of our product.

Knowing that our product must not interfere with your actual work, we are convinced that our product offers you the solution that supports you in the effective and trouble-free execution of your individual application.

Please read these operating instructions before putting your product into operation for the first time. If you have any questions or suggestions, please feel free to contact info@pfeiffer-vacuum.de.

Further operating instructions from Pfeiffer Vacuum can be found in the [Download Center](#) on our website.

Disclaimer of liability

These operating instructions describe all models and variants of your product. Note that your product may not be equipped with all features described in this document. Pfeiffer Vacuum constantly adapts its products to the latest state of the art without prior notice. Please take into account that online operating instructions can deviate from the printed operating instructions supplied with your product.

Furthermore, Pfeiffer Vacuum assumes no responsibility or liability for damage resulting from the use of the product that contradicts its proper use or is explicitly defined as foreseeable misuse.

Copyright

This document is the intellectual property of Pfeiffer Vacuum and all contents of this document are protected by copyright. They may not be copied, altered, reproduced or published without the prior written permission of Pfeiffer Vacuum.

We reserve the right to make changes to the technical data and information in this document.

Table of contents

1	About this manual	7
1.1	Validity	7
1.1.1	Applicable documents	7
1.1.2	Variants	7
1.2	Target group	7
1.3	Conventions	7
1.3.1	Instructions in the text	7
1.3.2	Pictographs	8
1.3.3	Labels on product	8
1.3.4	Abbreviations	9
2	Safety	10
2.1	General safety information	10
2.2	Safety instructions	10
2.3	Safety precautions	14
2.4	Limits of use of product	14
2.5	Proper use	15
2.6	Foreseeable improper use	15
2.7	Personnel qualification	15
2.7.1	Ensuring personnel qualification	16
2.7.2	Personnel qualification for maintenance and repair	16
2.7.3	Advanced training with Pfeiffer Vacuum	16
3	Product description	17
3.1	Function	17
3.1.1	Actuator	17
3.1.2	Gas ballast	17
3.1.3	Vacuum safety valve	17
3.1.4	Operating fluid, oil	18
3.2	Operating principle	18
3.3	Product features	18
3.4	Identifying the product	19
3.5	Scope of delivery	19
4	Transportation and Storage	20
4.1	Transporting vacuum pump	20
4.2	Storing vacuum pump	21
5	Installation	22
5.1	Setting up vacuum pump	22
5.2	Changing flange positions	22
5.3	Connecting vacuum side	23
5.4	Connecting exhaust side	24
5.5	Implementing electrical safety measures	25
5.5.1	Installing miniature circuit breaker	26
5.5.2	Installing a residual current circuit breaker	26
5.6	Connecting to mains power supply	26
5.6.1	Removing/attaching upper motor cover	27
5.6.2	Connecting single-phase motors	28
5.6.3	Connecting three-phase motor with 6-pin terminal board	29
5.6.4	Setting motor protection switch	30
5.6.5	Connecting the thermic winding protection	30
5.6.6	Checking direction of rotation	31
5.7	Filling up operating fluid	31
6	Operation	33
6.1	Commissioning vacuum pump	33

6.2	Switching on vacuum pump	33
6.3	Operating rotary vane pump with gas ballast	34
6.3.1	Gas ballast valve – standard version	35
6.3.2	Gas ballast valve with inert gas connection	35
6.4	Refilling operating fluid	36
6.5	Switching off vacuum pump	37
7	Maintenance	38
7.1	Maintenance instructions	38
7.2	Checklist for inspection and maintenance	39
7.3	Change the operating fluid	40
7.3.1	Determining degree of aging of P3 operating fluid	41
7.3.2	Changing operating fluid	42
7.3.3	Rinsing and cleaning rotary vane pump	44
7.4	Removing and cleaning the gas ballast valve	45
7.4.1	Removing gas ballast valve	45
7.4.2	Disassembling and cleaning gas ballast valve	45
7.4.3	Removing and cleaning silencer nozzle	46
7.4.4	Assembling and installing gas ballast valve	47
7.5	Replacing diaphragm on vacuum safety valve	47
8	Decommissioning	49
8.1	Shutting down for longer periods	49
8.2	Recommissioning	49
9	Recycling and disposal	50
9.1	General disposal information	50
9.2	Dispose of rotary vane pump	50
10	Malfunctions	51
11	Service solutions by Pfeiffer Vacuum	53
12	Spare parts	55
12.1	Ordering spare part packages	55
12.2	Contents of spare part packages	55
13	Accessories	56
13.1	Accessory information	56
13.2	Ordering accessories	56
14	Technical data and dimensions	58
14.1	General	58
14.2	Substances in contact with media	58
14.3	Technical data	59
14.4	Dimensions	61
	EC Declaration of Conformity	65
	UK Declaration of Conformity	66

List of tables

Tbl. 1:	Labels on product	8
Tbl. 2:	Abbreviations used in this document	9
Tbl. 3:	Limits of use of product	15
Tbl. 4:	Features of rotary vane pumps	18
Tbl. 5:	Technical requirements for a miniature circuit breaker	26
Tbl. 6:	Technical requirements for a residual current circuit breaker	26
Tbl. 7:	Recommended fuse ratings for on-site fuse protection	28
Tbl. 8:	Permissible voltage ranges	28
Tbl. 9:	Motor protection switch settings	30
Tbl. 10:	Maintenance intervals	40
Tbl. 11:	Troubleshooting for rotary vane pumps	52
Tbl. 12:	Spare part packages	55
Tbl. 13:	Accessories DuoVane 6 / DuoVane 12	56
Tbl. 14:	Accessories DuoVane 18 / DuoVane 22	57
Tbl. 15:	Consumables	57
Tbl. 16:	Conversion table: Pressure units	58
Tbl. 17:	Conversion table: Units for gas throughput	58
Tbl. 18:	Materials that make contact with the process media	58
Tbl. 19:	Technical data, DuoVane with three phase motor	59
Tbl. 20:	Technical data, DuoVane with single phase motor	60

List of figures

Fig. 1:	Position of the labels on the product	9
Fig. 2:	Structure of the rotary vane pump	17
Fig. 3:	Rotary vane vacuum pump functional principle	18
Fig. 4:	Transporting vacuum pump	20
Fig. 5:	Minimum distances and permissible inclinations	22
Fig. 6:	Possible flange positions	23
Fig. 7:	Changing the flange positions	23
Fig. 8:	Vacuum connection with flange connection	24
Fig. 9:	Exhaust connection with flange connection	25
Fig. 10:	Removing/attaching upper motor cover	27
Fig. 11:	Example of a voltage selector switch on the motor	28
Fig. 12:	Ground terminal	29
Fig. 13:	Delta connection for low voltage	29
Fig. 14:	Star circuit for high voltage	30
Fig. 15:	Thermic winding protection with three-phase motor	31
Fig. 16:	Filling up operating fluid	32
Fig. 17:	Gas ballast valve, standard version	35
Fig. 18:	Inert gas connection on gas ballast valve	36
Fig. 19:	Refilling operating fluid	37
Fig. 20:	Draining operating fluid	43
Fig. 21:	Removing/fitting the cap on the rotary vane pump	44
Fig. 22:	Removing gas ballast valve	45
Fig. 23:	Individual parts of the gas ballast valve	46
Fig. 24:	Remove silencer nozzle	47
Fig. 25:	Diaphragm of vacuum safety valve	48
Fig. 26:	Dimensions DuoVane 6 with three phase motor	61
Fig. 27:	Dimensions DuoVane 6 with single-phase motor	61
Fig. 28:	Dimensions DuoVane 12 with three phase motor	62
Fig. 29:	Dimensions DuoVane 12 with single-phase motor	62
Fig. 30:	Dimensions DuoVane 18 with three phase motor	63
Fig. 31:	Dimensions DuoVane 18 with single-phase motor	63
Fig. 32:	Dimensions DuoVane 22 with three phase motor	64
Fig. 33:	Dimensions DuoVane 22 with single-phase motor	64

1 About this manual



IMPORTANT

Read carefully before use.

Keep the manual for future consultation.

1.1 Validity

These operating instructions are a customer document of Pfeiffer Vacuum. The operating instructions describe the functions of the named product and provide the most important information for the safe use of the device. The description is written in accordance with the valid directives. The information in these operating instructions refers to the product's current development status. The document shall remain valid provided that the customer does not make any changes to the product.

1.1.1 Applicable documents

Designation	Document
Declaration of conformity	A component of these operating instructions

1.1.2 Variants

These instructions apply to DuoVane series vacuum pumps:

Pump type	Pump version
DuoVane 6	<ul style="list-style-type: none"> Rotary vane pump for non-corrosive media
DuoVane 12	<ul style="list-style-type: none"> Rotary vane pump for non-corrosive media
DuoVane 18	<ul style="list-style-type: none"> Rotary vane pump for non-corrosive media
DuoVane 22	<ul style="list-style-type: none"> Rotary vane pump for non-corrosive media

1.2 Target group

These operating instructions are aimed at all persons performing the following activities on the product:

- Transportation
- Setup (Installation)
- Usage and operation
- Decommissioning
- Maintenance and cleaning
- Storage or disposal

The work described in this document is only permitted to be performed by persons with the appropriate technical qualifications (expert personnel) or who have received the relevant training from Pfeiffer Vacuum.

1.3 Conventions

1.3.1 Instructions in the text

Usage instructions in the document follow a general structure that is complete in itself. The required action is indicated by an individual step or multi-part action steps.

Individual action step

A horizontal, solid triangle indicates the only step in an action.

- This is an individual action step.

Sequence of multi-part action steps

The numerical list indicates an action with multiple necessary steps.

1. Step 1
2. Step 2
3. ...

1.3.2 Pictographs

Pictographs used in the document indicate useful information.



Note



Tip

1.3.3 Labels on product

This section describes all the labels on the product along with their meanings.

	<p>Rating plate (example) The rating plate is located on the front side of the pump housing.</p> <p>Motor rating plate (not shown) The motor rating plate is located below the mains connection.</p>
	<p>Warning hot surface This label warns of injuries caused by high temperatures as a result of contact without protection during operation.</p>
	<p>Sticker for preset input voltage Preset input voltage (115 V or 230 V) of single phase motor with voltage selection</p>
	<p>Operating instructions note This sticker indicates that this operating instructions must be read before performing any tasks.</p>

Tbl. 1: Labels on product

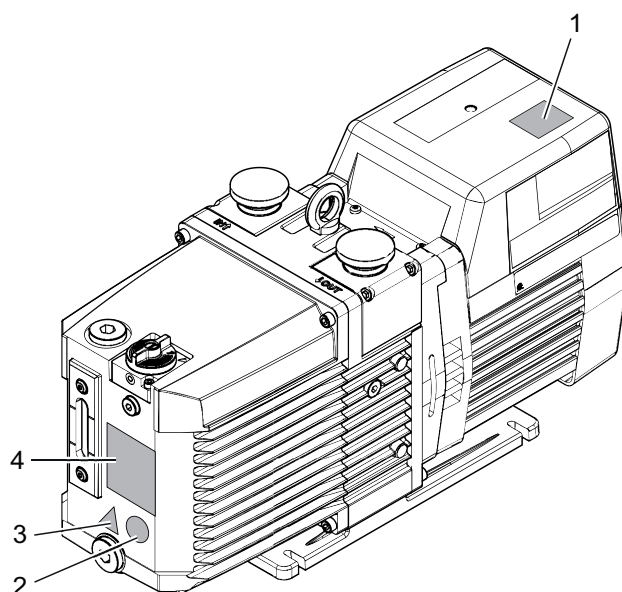


Fig. 1: Position of the labels on the product

- | | |
|---|------------------------|
| 1 Sticker for preset input voltage | 3 Warning: Hot surface |
| 2 Note: Read the operating instructions | 4 Rating plate |

1.3.4 Abbreviations

Abbreviation	Explanation
BA	Operating instructions
DN	Nominal diameter (diamètre nominal)
FKM	Fluorinated rubber
GBV	Gas ballast valve
HV	High voltage
I_N	Rated current
I_{max}	Maximum current
ISO	Flange: Connection in accordance with ISO 1609 and ISO 2861
MCB	Miniature circuit breaker
N.C.	Normally closed contact
PE	Protective earth (earthed conductor)
ODK	Operating fluid return line (oil drain kit)
OME	Oil mist filter (oil mist eliminator)
RCCB	Residual current operated circuit breaker
RSSR	Radial shaft seal ring
WAF	Width Across Flats
MM	Maintenance manual

Tbl. 2: Abbreviations used in this document

2 Safety

2.1 General safety information

The following 4 risk levels and 1 information level are taken into account in this document.

DANGER

Immediately pending danger

Indicates an immediately pending danger that will result in death or serious injury if not observed.

- ▶ Instructions to avoid the danger situation

WARNING

Potential pending danger

Indicates a pending danger that could result in death or serious injury if not observed.

- ▶ Instructions to avoid the danger situation

CAUTION

Potential pending danger

Indicates a pending danger that could result in minor injuries if not observed.

- ▶ Instructions to avoid the danger situation

NOTICE

Danger of damage to property

Is used to highlight actions that are not associated with personal injury.

- ▶ Instructions to avoid damage to property



Notes, tips or examples indicate important information about the product or about this document.

2.2 Safety instructions

All safety instructions in this document are based on the results of the risk assessment carried out in accordance with Machinery Directive 2006/42/EC Annex I and EN ISO 12100 Section 5. Where applicable, all life cycle phases of the product were taken into account.

Risks during transport

WARNING

Risk of serious injury from swinging, toppling or falling objects

During transport, there is a risk of crushing and impact on swinging, toppling or falling objects. There is a risk of injuries to limbs, up to and including bone fractures and head injuries.

- ▶ Secure the danger zone if necessary.
- ▶ Pay attention to the center of gravity of the load during transport.
- ▶ Ensure even movements and moderate speeds.
- ▶ Observe safe handling of the transport devices.
- ▶ Avoid sloping attachment aids.
- ▶ Never stack products.
- ▶ Wear protective equipment, e.g. safety shoes.

Risks during installation

⚠ DANGER**Danger to life from electric shock**

Touching exposed and voltage-bearing elements causes an electric shock. Improper connection of the mains supply leads to the risk of touchable live housing parts. There is a risk to life.

- ▶ Before the installation, check that the connection leads are voltage-free.
- ▶ Make sure that electrical installations are only carried out by qualified electricians.
- ▶ Provide adequate grounding for the device.
- ▶ After connection work, carry out an earthed conductor check.

⚠ WARNING**Danger of poisoning from toxic vapors**

Igniting and heating synthetic operating fluid generates toxic vapors. Danger of poisoning if inhaled.

- ▶ Observe the application instructions and precautions.
- ▶ Do not allow tobacco products to come into contact with the operating fluid.

⚠ CAUTION**Risk of injury from entrapment of body parts**

After a power failure or a standstill as a result of overheating, the motor restarts automatically. A risk exists of minor injury to fingers and hands (e.g., hematoma), from direct contact with the vacuum flange.

- ▶ Maintain sufficient distance to the vacuum flange during all work.
- ▶ Safely disconnect motor from the mains.
- ▶ Secure the motor against re-start.

⚠ CAUTION**Danger of injury from bursting as a result of high pressure in the exhaust line**

Faulty or inadequate exhaust pipes lead to dangerous situations, e.g. increased exhaust pressure. There is a danger of bursting. Injuries caused by flying fragments, the escaping of high pressure, and damage to the unit cannot be excluded.

- ▶ Route the exhaust line without shut-off units.
- ▶ Observe the permissible pressures and pressure differentials for the product.
- ▶ Check the function of the exhaust line on a regular basis.

⚠ CAUTION**Danger of burns on hot surfaces**

Depending on the operating and ambient conditions, the surface temperature of the vacuum pump can increase to above 70 °C. If access to the vacuum pump is unrestricted, there is a danger of burns due to contact with hot surfaces.

- ▶ Install suitable touch protection if the vacuum pump is unrestrictedly accessible.
- ▶ Allow the vacuum pump to cool down before carrying out any work.
- ▶ Contact Pfeiffer Vacuum for suitable touch protection in system solutions.

Risks during operation

⚠ WARNING**Danger of poisoning due to toxic process media escaping from the exhaust pipe**

During operation with no exhaust line, the vacuum pump allows exhaust gases and vapors to escape freely into the air. There is a risk of injury and fatality due to poisoning in processes with toxic process media.

- ▶ Observe the pertinent regulations for handling toxic process media.
- ▶ Safely purge toxic process media via an exhaust line.
- ▶ Use appropriate filter equipment to separate toxic process media.

CAUTION

Risk of injury from entrapment of body parts

After a power failure or a standstill as a result of overheating, the motor restarts automatically. A risk exists of minor injury to fingers and hands (e.g., hematoma), from direct contact with the vacuum flange.

- ▶ Maintain sufficient distance to the vacuum flange during all work.
- ▶ Safely disconnect motor from the mains.
- ▶ Secure the motor against re-start.

CAUTION

Danger of injury if hair or loose clothing is pulled in

There is a danger of injury from getting pulled in at rotating parts of the fan.

- ▶ Do not wear loose-fitting jewelry, or hide it under clothing.
- ▶ Wear close-fitting clothing.
- ▶ Use a hair net if necessary.

CAUTION

Danger of injury from bursting as a result of high pressure in the exhaust line

Faulty or inadequate exhaust pipes lead to dangerous situations, e.g. increased exhaust pressure. There is a danger of bursting. Injuries caused by flying fragments, the escaping of high pressure, and damage to the unit cannot be excluded.

- ▶ Route the exhaust line without shut-off units.
- ▶ Observe the permissible pressures and pressure differentials for the product.
- ▶ Check the function of the exhaust line on a regular basis.

CAUTION

Danger of burns on hot surfaces

Depending on the operating and ambient conditions, the surface temperature of the vacuum pump can increase to above 70 °C. If access to the vacuum pump is unrestricted, there is a danger of burns due to contact with hot surfaces.

- ▶ Install suitable touch protection if the vacuum pump is unrestrictedly accessible.
- ▶ Allow the vacuum pump to cool down before carrying out any work.
- ▶ Contact Pfeiffer Vacuum for suitable touch protection in system solutions.

CAUTION

Scalding from hot operating fluid

Danger of burns when draining operating fluid if it comes into contact with the skin.

- ▶ Wear protective equipment.
- ▶ Use a suitable collection receptacle.

Risks during maintenance, decommissioning and malfunctions

WARNING

Health hazard through poisoning from toxic contaminated components or devices

Toxic process media result in contamination of devices or parts of them. During maintenance work, there is a risk to health from contact with these poisonous substances. Illegal disposal of toxic substances causes environmental damage.

- ▶ Take suitable safety precautions and prevent health hazards or environmental pollution by toxic process media.
- ▶ Decontaminate affected parts before carrying out maintenance work.
- ▶ Wear protective equipment.

⚠ WARNING**Danger of poisoning from toxic vapors**

Igniting and heating synthetic operating fluid generates toxic vapors. Danger of poisoning if inhaled.

- ▶ Observe the application instructions and precautions.
- ▶ Do not allow tobacco products to come into contact with the operating fluid.

⚠ WARNING**Health hazard and risk of environmental damage from toxic contaminated operating fluid**

Toxic process media can cause operating fluid contamination. When changing the operating fluid, there is a health hazard due to contact with poisonous substances. Illegal disposal of toxic substances causes environmental damage.

- ▶ Wear suitable personal protective equipment when handling these media.
- ▶ Dispose of the operating fluid according to locally applicable regulations.

⚠ WARNING**Danger to life from electric shock in the event of a fault**

In the event of a fault, devices connected to the mains may be live. There is a danger to life from electric shock when making contact with live components.

- ▶ Always keep the mains connection freely accessible so you can disconnect it at any time.

⚠ CAUTION**Scalding from hot operating fluid**

Danger of burns when draining operating fluid if it comes into contact with the skin.

- ▶ Wear protective equipment.
- ▶ Use a suitable collection receptacle.

⚠ CAUTION**Risk of injury from entrapment of body parts**

After a power failure or a standstill as a result of overheating, the motor restarts automatically. A risk exists of minor injury to fingers and hands (e.g., hematoma), from direct contact with the vacuum flange.

- ▶ Maintain sufficient distance to the vacuum flange during all work.
- ▶ Safely disconnect motor from the mains.
- ▶ Secure the motor against re-start.

⚠ CAUTION**Danger of injury if hair or loose clothing is pulled in**

There is a danger of injury from getting pulled in at rotating parts of the fan.

- ▶ Do not wear loose-fitting jewelry, or hide it under clothing.
- ▶ Wear close-fitting clothing.
- ▶ Use a hair net if necessary.

⚠ CAUTION**Danger of burns on hot surfaces**

In the event of a fault, the surface temperature of the vacuum pump can increase to above 105 °C.

- ▶ Allow the vacuum pump to cool down before carrying out any work.
- ▶ Wear personal protective equipment if necessary.

⚠ CAUTION

Danger of injury from moving parts

After a power failure or a standstill as a result of overheating, the motor restarts automatically. There is a risk of injury to fingers and hands if they enter the operating range of rotating parts.

- ▶ Safely disconnect motor from the mains.
- ▶ Secure the motor against reactivation.
- ▶ Dismantle the vacuum pump for inspection, away from the system if necessary.

Risks during disposal

⚠ WARNING

Health hazard through poisoning from toxic contaminated components or devices

Toxic process media result in contamination of devices or parts of them. During maintenance work, there is a risk to health from contact with these poisonous substances. Illegal disposal of toxic substances causes environmental damage.

- ▶ Take suitable safety precautions and prevent health hazards or environmental pollution by toxic process media.
- ▶ Decontaminate affected parts before carrying out maintenance work.
- ▶ Wear protective equipment.

2.3 Safety precautions



Duty to provide information on potential dangers

The product holder or user is obliged to make all operating personnel aware of dangers posed by this product.

Every person who is involved in the installation, operation or maintenance of the product must read, understand and adhere to the safety-related parts of this document.



Infringement of conformity due to modifications to the product

The Declaration of Conformity from the manufacturer is no longer valid if the operator changes the original product or installs additional equipment.

- Following the installation into a system, the operator is required to check and re-evaluate the conformity of the overall system in the context of the relevant European Directives, before commissioning that system.

General safety precautions when handling the product

- ▶ Observe all applicable safety and accident prevention regulations.
- ▶ Check that all safety measures are observed at regular intervals.
- ▶ Do not expose body parts to the vacuum.
- ▶ Always ensure a secure connection to the earthed conductor (PE).
- ▶ Never disconnect plug connections during operation.
- ▶ Observe the above shutdown procedures.
- ▶ Keep lines and cables away from hot surfaces (> 70 °C).
- ▶ Never fill or operate the unit with cleaning agents or cleaning agent residues.
- ▶ Do not carry out your own conversions or modifications on the unit.
- ▶ Observe the unit protection class prior to installation or operation in other environments.
- ▶ Provide suitable touch protection, if the surface temperature exceeds 70 °C.

2.4 Limits of use of product

Installation location	Weatherproof (internal space)
Installation altitude	max. 2000 m above sea level ¹⁾
Protection class (according to IEC 61010)	I
Degree of pollution (according to IEC 61010)	2

Overvoltage category	II
Protection class	IP40 (single phase motor) IP43 (three phase motor)
Housing type (according to UL 50E)	Type 1
Permissible angle of inclination	$\pm 1^\circ$ in longitudinal direction, $\pm 2^\circ$ in transverse direction
Ambient temperature	+12 °C to +40 °C
Relative air humidity	max. 85%
Pumped medium intake temperature, max.	+40 °C
Exhaust pressure of the vacuum pump	\geq atmospheric pressure ≤ 1500 hPa absolute
Exhaust pressure at OME	max. atmospheric pressure
Constant intake pressure, max.	50 hPa absolute

Tbl. 3: Limits of use of product

2.5 Proper use

- ▶ Use the vacuum pump for vacuum generation only.
- ▶ When pumping media with an oxygen concentration level of $\geq 21\%$, only use perfluorinated, synthetic oils (F4, F5, A113) as operating fluid.
- ▶ Adhere to the installation, commissioning, operating, and maintenance instructions.
- ▶ Do not use any accessory parts other than those recommended by Pfeiffer Vacuum.

2.6 Foreseeable improper use

Improper use of the product invalidates all warranty and liability claims. Any use that is counter to the purpose of the product, whether intentional or unintentional, is regarded as improper use; in particular:

- Pumping of corrosive media (exception: C version of the rotary vane pumps)
- Pumping radioactive media
- Pumping of gases that introduce an ignition source to the suction chamber
- Pumping of gases that contain contamination such as particles, dust, or condensate
- Pumping explosive media
- Pumping of media with a propensity to sublimation
- Pumping of fluids
- Using the vacuum pump in potentially explosive atmospheres
- Using the vacuum pump outside the specified area of application
- Using for pressure generation
- Use in strong electrical, magnetic, or electromagnetic fields
- Connecting to vacuum pumps and units that are not designed for this purpose according to their operating instructions
- Connecting to units with exposed live parts
- Use of accessories or spare parts not listed in these instructions
- Use of operating fluids other than those specified by Pfeiffer Vacuum
- Utilize mineral oil as operating fluid with an oxygen concentration level of $> 21\%$

Mineral oils are combustible and ignite at high temperatures and when they come into contact with pure oxygen. These oils oxidize heavily and thus lose their lubricating capacity.

2.7 Personnel qualification

The work described in this document may only be carried out by persons who have appropriate professional qualifications and the necessary experience or who have completed the necessary training as provided by Pfeiffer Vacuum.

1) When installing at altitudes > 1000 m above sea level, reduce the power of the motor or limit the ambient temperature, as the vacuum pump will heat up more.

Training people

1. Train the technical personnel on the product.
2. Only let personnel to be trained work with and on the product when under the supervision of trained personnel.
3. Only allow trained technical personnel to work with the product.
4. Before starting work, make sure that the commissioned personnel have read and understood these operating instructions and all applicable documents, in particular the safety, maintenance and repair information.

2.7.1 Ensuring personnel qualification

Specialist for mechanical work

Only a trained specialist may carry out mechanical work. Within the meaning of this document, specialists are people responsible for construction, mechanical installation, troubleshooting and maintenance of the product, and who have the following qualifications:

- Qualification in the mechanical field in accordance with nationally applicable regulations
- Knowledge of this documentation

Specialist for electrotechnical work

Only a trained electrician may carry out electrical engineering work. Within the meaning of this document, electricians are people responsible for electrical installation, commissioning, troubleshooting, and maintenance of the product, and who have the following qualifications:

- Qualification in the electrical engineering field in accordance with nationally applicable regulations
- Knowledge of this documentation

In addition, these individuals must be familiar with applicable safety regulations and laws, as well as the other standards, guidelines, and laws referred to in this documentation. The above individuals must have an explicitly granted operational authorization to commission, program, configure, mark, and earth devices, systems, and circuits in accordance with safety technology standards.

Trained individuals

Only adequately trained individuals may carry out all works in other transport, storage, operation and disposal fields. Such training must ensure that individuals are capable of carrying out the required activities and work steps safely and properly.

2.7.2 Personnel qualification for maintenance and repair



Advanced training courses

Pfeiffer Vacuum offers advanced training courses to maintenance levels 2 and 3.

Adequately trained individuals are:

- **Maintenance level 1**
 - Customer (trained specialist)
- **Maintenance level 2**
 - Customer with technical education
 - Pfeiffer Vacuum service technician
- **Maintenance level 3**
 - Customer with Pfeiffer Vacuum service training
 - Pfeiffer Vacuum service technician

2.7.3 Advanced training with Pfeiffer Vacuum

For optimal and trouble-free use of this product, Pfeiffer Vacuum offers a comprehensive range of courses and technical trainings.

For more information, please contact [Pfeiffer Vacuum technical training](#).

3 Product description

3.1 Function

DuoVane series rotary vane pumps are two-stage, oil-sealed rotary displacement pumps for use in a low and medium vacuum. The rotary vane pump is available in the standard version with claw coupling and asynchronous motor.

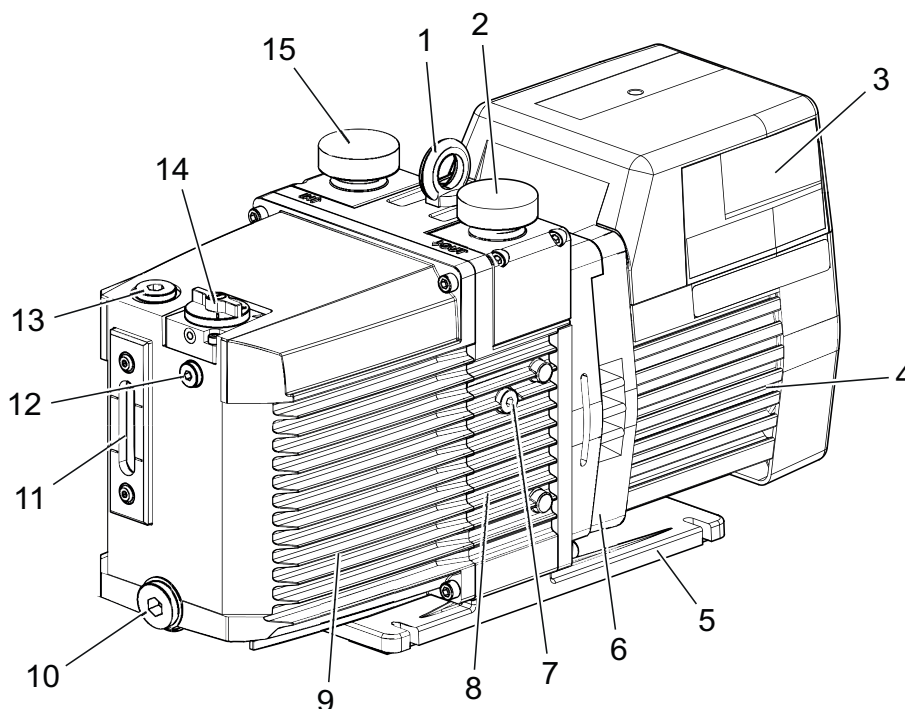


Fig. 2: Structure of the rotary vane pump

- | | |
|--------------------------------------|---|
| 1 Lifting eye | 9 Cap |
| 2 Exhaust flange with protective cap | 10 Drain screw |
| 3 Electrical connection | 11 Sight glass |
| 4 Motor | 12 Locking screw for optional operating fluid return line (ODK) |
| 5 Base plate | 13 Filler screw |
| 6 Motor flange | 14 Gas ballast valve |
| 7 Locking screw | 15 Vacuum flange with protective cap |
| 8 Stand | |

3.1.1 Actuator

The rotary vane pump has a three phase or single phase motor rated at 50 Hz or 60 Hz.

Motor types

- Three phase motor (without switch and mains cable) with
 - built-in thermic winding protection
- Single-phase motor with reversible voltage range,
 - thermal protection switch,
 - mains switch and
 - Rubber connector

3.1.2 Gas ballast

An integrated gas ballast system serves the controlled supply of ambient air or inert gas into the suction chamber. Gas ballast supports the reduction of condensate accumulating in the pumping system.

3.1.3 Vacuum safety valve

The rotary vane pumps are equipped with a vacuum safety valve. This separates the rotary vane pump from the vacuum chamber in the event of intentional or unintentional standstill, and vents the pumping

system with the displaced gas so that oil does not rise into the vacuum chamber. After switching on, the valve opens after a delay.

3.1.4 Operating fluid, oil

The pump oil, also known as operating fluid, fulfills various tasks in a rotary vane pump:

- lubrication of all moving parts
- filling part of the dead volume under the exhaust valve
- sealing the gap between the intake and exhaust channel, and between the vanes and the working chamber
- ensuring an optimal temperature balance through heat transfer

3.2 Operating principle

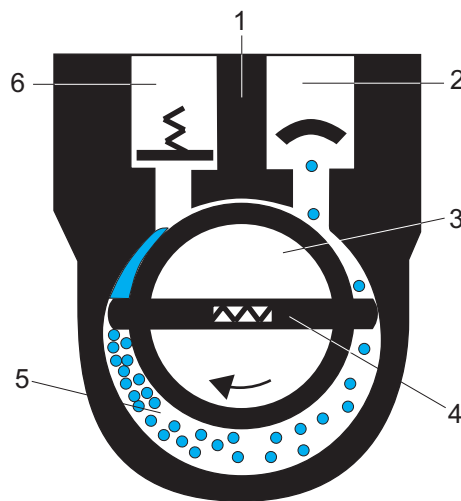


Fig. 3: Rotary vane vacuum pump functional principle

- | | |
|-------------------------|--------------------|
| 1 Housing | 4 Vane |
| 2 Vacuum flange (inlet) | 5 Suction chamber |
| 3 Rotor | 6 Exhaust (outlet) |

The rotary vane pump is an oil-sealed rotary displacement pump. The pumping system comprises the housing, the eccentrically mounted rotor, and the centrifugal and spring-loaded radially sliding vanes, which divide the suction chamber into multiple chambers. The volume of each chamber changes periodically as the rotor rotates. This causes the gas to be drawn in at the vacuum flange, and compressed in the suction chamber by the rotation of the rotor until the exhaust valve opens against the atmospheric pressure at the outlet and expels the gas. The exhaust valve is oil-sealed. When the valve opens, a small quantity of oil penetrates into the suction chamber. In addition to lubrication, this also causes the gaps between the rotor, stator, and vanes to seal.

3.3 Product features

Pump type	Pumping speed	Characteristics
DuoVane 6	5.5 m ³ /h(50 Hz) 6.5 m ³ /h(60 Hz)	<ul style="list-style-type: none"> • Two-stage rotary vane pump • Asynchronous motor and claw coupling • Gas ballast valve • Intake side vacuum safety valve
DuoVane 12	9.5 m ³ /h(50 Hz) 11.8 m ³ /h(60 Hz)	
DuoVane 18	14 m ³ /h(50 Hz) 16.9 m ³ /h(60 Hz)	
DuoVane 22	19 m ³ /h(50 Hz) 22.5 m ³ /h(60 Hz)	

Tbl. 4: Features of rotary vane pumps

3.4 Identifying the product

- ▶ To ensure clear identification of the product when communicating with Pfeiffer Vacuum, always keep all of the information on the rating plate to hand.
- ▶ Observe the motor-specific data on the motor rating plate attached separately.

3.5 Scope of delivery

- Rotary vane vacuum pump with motor
- Operating fluid (other than F4, F5 and A113)
- Locking caps for both connection flanges
- Operating instructions

4 Transportation and Storage

4.1 Transporting vacuum pump

WARNING

Risk of serious injury from swinging, toppling or falling objects

During transport, there is a risk of crushing and impact on swinging, toppling or falling objects. There is a risk of injuries to limbs, up to and including bone fractures and head injuries.

- ▶ Secure the danger zone if necessary.
- ▶ Pay attention to the center of gravity of the load during transport.
- ▶ Ensure even movements and moderate speeds.
- ▶ Observe safe handling of the transport devices.
- ▶ Avoid sloping attachment aids.
- ▶ Never stack products.
- ▶ Wear protective equipment, e.g. safety shoes.



Preparations for transport

Pfeiffer Vacuum recommends keeping the transport packaging and original protective cover.

Safe transport of the product

1. Observe the weight specified on the packaging.
2. Use a transport aid if necessary (trolley, lift truck).
3. Transport the product in its original packaging.
4. Always place the product on an adequately sized, level surface.
5. Fully drain the operating fluid.

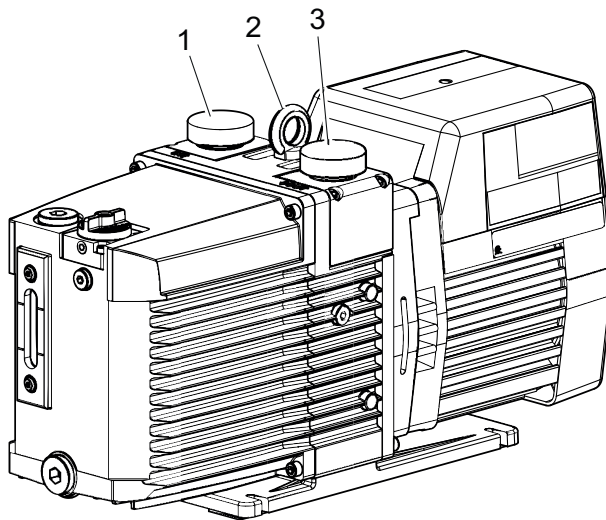


Fig. 4: Transporting vacuum pump

- | | |
|----------------------------|-----------------------------|
| 1 Vacuum flange safety cap | 3 Exhaust flange safety cap |
| 2 Lifting eye | |

Transporting the vacuum pump without its packaging

1. Unpack the vacuum pump.
2. To protect the inside of the pump, leave both protective caps on the connection flanges during transport.
3. For lifting, use the crane lug provided for this purpose, located on the top of the pump.
4. Lift the vacuum pump out of the transport packaging.
5. Always place the vacuum pump on an adequately sized, level surface.

4.2 Storing vacuum pump

**Storage**

Pfeiffer Vacuum recommends storing the products in their original transport packaging.

Safe storing vacuum pump

1. Fill the vacuum pump with operating fluid up to the upper edge of the sight glass.
2. Close both connection flanges and all openings on the vacuum pump.
3. Make sure that the gas ballast valve is closed.
4. Store the vacuum pump only in dry, dust-free rooms, within the specified ambient conditions.
5. In rooms with humid or aggressive atmospheres: Hermetically seal the vacuum pump together with a drying agent in a plastic bag.
6. Change the operating fluid if the storage period is longer than 2 years.

5 Installation

5.1 Setting up vacuum pump

⚠ CAUTION

Danger of burns on hot surfaces

Depending on the operating and ambient conditions, the surface temperature of the vacuum pump can increase to above 70 °C. If access to the vacuum pump is unrestricted, there is a danger of burns due to contact with hot surfaces.

- ▶ Install suitable touch protection if the vacuum pump is unrestrictedly accessible.
- ▶ Allow the vacuum pump to cool down before carrying out any work.
- ▶ Contact Pfeiffer Vacuum for suitable touch protection in system solutions.

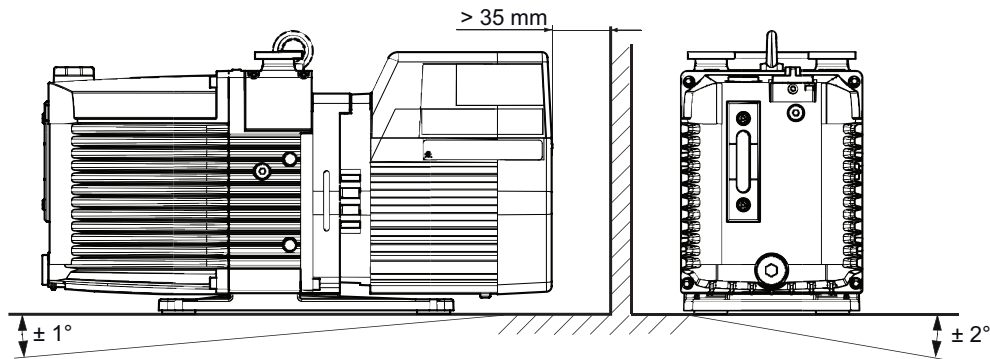


Fig. 5: Minimum distances and permissible inclinations

Procedure

- When selecting the installation location, observe the requirement for touch protection to prevent burns.
 - Closed housing: no touch protection required
 - Access for trained individuals only: no touch protection required
 - Unrestricted access for untrained individuals: Touch protection required
 - Pfeiffer Vacuum supports you in implementing the touch protection.
1. Place the vacuum pump on a flat, horizontal surface, to safeguard the operating fluid supply.
 2. Screw the base plate of the vacuum pump to the mounting surface if necessary.
 3. Observe the max. permissible angles of inclination.
 4. When installing the pump in a closed housing, ensure adequate air circulation.
 5. Keep the sight glass and gas ballast valve visible and freely accessible.
 6. Keep the voltage and frequency specifications on the motor rating plate visible and freely accessible.
 7. Fill with operating fluid prior to first commissioning.
 - Quantity and type of the operating fluid can be found on the rating plate.

5.2 Changing flange positions

Depending on the application and accessories, you can change the position of the vacuum flange and the exhaust flange independently of one another. Pfeiffer Vacuum supplies the vacuum pump with flanges positioned vertically.

Required consumables

- Paper towels
- Isopropanol, as required

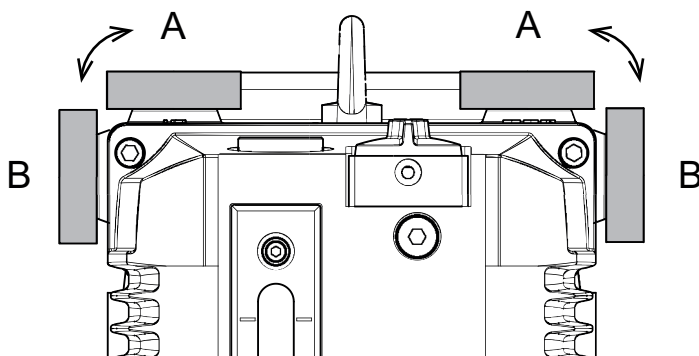


Fig. 6: Possible flange positions

A Vertical position

B Horizontal position

Required tools

- Allen key, **WAF 5**
- Calibrated torque wrench (tightening factor ≤ 2.5)

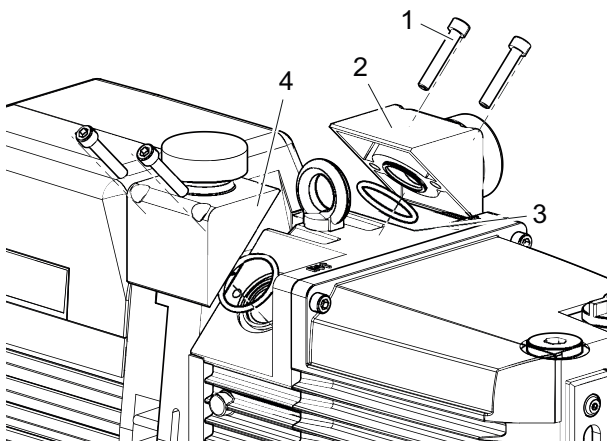


Fig. 7: Changing the flange positions

1 Allen head screws

2 Interchangeable flange with protective cap (exhaust connection)

3 O-ring

4 Interchangeable flange with protective cap (vacuum connection)

Procedure

1. Remove the hexagon socket screws.
2. Remove the interchangeable flange with the o-ring.
3. Clean the parts and sealing surfaces.
4. Hold the interchangeable flange with the o-ring in the new position.
5. Fasten the hexagon socket screws.
 - Tightening torque: **5 Nm**

5.3 Connecting vacuum side

NOTICE

Property damage from contaminated gases

Pumping gases that contain contamination damages the vacuum pump.

- Use suitable filters or separators from the Pfeiffer Vacuum range of accessories, to protect the vacuum pump.



Installation and operation of accessories

Pfeiffer Vacuum offers a series of special, compatible accessories for its rotary vane pumps.

- You can find information and ordering options for approved [accessories](#) online.
- Described accessories are not included in the shipment.

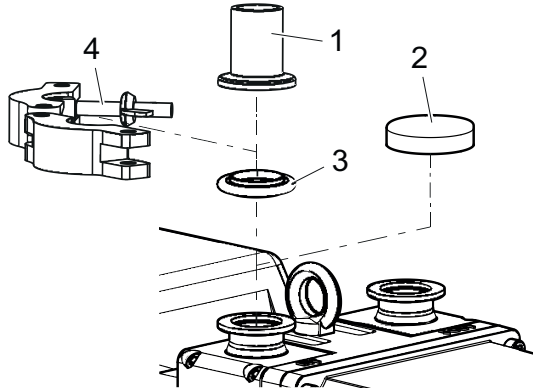


Fig. 8: Vacuum connection with flange connection

- | | |
|------------------|------------------------------|
| 1 Intake line | 3 Centering ring with O-ring |
| 2 Protective cap | 4 Circlip |

Procedure

1. Remove the protective cap from the vacuum flange.
2. Make sure that the centering ring and o-ring are seated correctly in the vacuum flange.
3. Establish the shortest possible connection between vacuum pump and vacuum chamber.
4. Choose a minimum vacuum line cross section equal to the nominal diameter of the connection flange.
5. Depending on the pump type, use PVC or metallic hoses with flange connections from the [Pfeiffer Vacuum component shop](#).
6. Support or suspend the piping to the vacuum pump so that no piping system forces act on the vacuum pump.
7. Connect both flanges with a circlip.
8. Use a separator or filter from the Pfeiffer Vacuum line of [accessories](#) if necessary.

5.4 Connecting exhaust side

⚠ CAUTION

Danger of injury from bursting as a result of high pressure in the exhaust line

Faulty or inadequate exhaust pipes lead to dangerous situations, e.g. increased exhaust pressure. There is a danger of bursting. Injuries caused by flying fragments, the escaping of high pressure, and damage to the unit cannot be excluded.

- Route the exhaust line without shut-off units.
- Observe the permissible pressures and pressure differentials for the product.
- Check the function of the exhaust line on a regular basis.

NOTICE

Malfunction and damage to the vacuum pump from improper exhaust line installation

Negative pressure in the exhaust line causes malfunctions and damage to the vacuum pump. Negative pressure is not permissible.

- Make sure that the exhaust pressure is within the approved limits.



Installation and operation of accessories

Pfeiffer Vacuum offers a series of special, compatible accessories for its rotary vane pumps.

- You can find information and ordering options for approved [accessories](#) online.
- Described accessories are not included in the shipment.



Condensate separator

Pfeiffer Vacuum recommends installing a condensate separator, with condensate drain at the lowest point of the exhaust line.

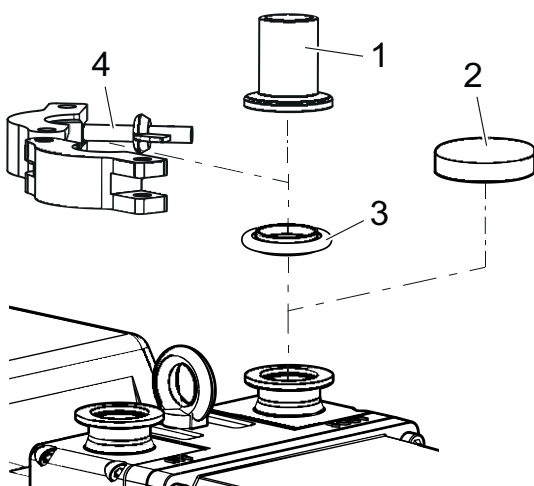


Fig. 9: Exhaust connection with flange connection

- | | |
|------------------|------------------------------|
| 1 Exhaust line | 3 Centering ring with O-ring |
| 2 Protective cap | 4 Circlip |

Procedure

1. Remove the protective cap from the exhaust flange.
2. Make sure that the centering ring and o-ring are seated correctly in the exhaust flange.
3. Choose a minimum exhaust line cross section equal to the nominal diameter of the connection flange.
4. Depending on the pump type, use PVC or metallic hoses with flange connections from the [Pfeiffer Vacuum component shop](#).
5. Route the piping downwards from the vacuum pump, to prevent condensate return.
6. Support or suspend the piping to the vacuum pump so that no piping system forces act on the vacuum pump.
7. Connect both flanges with a circlip.

5.5 Implementing electrical safety measures

WARNING

Risk of danger to life through missing mains disconnection device

The vacuum pump and electronic drive unit are **not** equipped with a mains disconnection device (mains switch).

- ▶ Install a mains disconnection device with a suitable miniature circuit breaker (MCB).
- ▶ Install a residual current circuit breaker (RCCB).

Installing mains disconnection device

- ▶ Install a mains disconnection device as a main switch.
- ▶ Use a miniature circuit breaker with an interruption rating of at least **10 kA**.
- ▶ Install the miniature circuit breaker within reach of the vacuum pump during building installation.
- ▶ Label the miniature circuit breaker as a disconnect device for the vacuum pump.

5.5.1 Installing miniature circuit breaker

Miniature circuit breaker (MCB)	
Tripping characteristic	B or C according to IEC 60947-2
Interruption rating (AIC)	10 kA
Rated current I_N	16 A, for voltage 200 – 240 V, 50/60 Hz

Tbl. 5: Technical requirements for a miniature circuit breaker

Procedure

- ▶ Observe the technical requirements for a miniature circuit breaker.
- ▶ Connect the vacuum pump to a mains grid with miniature circuit breaker.
- ▶ Label the miniature circuit breaker as a switch-off device for the vacuum pump.

5.5.2 Installing a residual current circuit breaker

In the event of an insulation fault, installation of a residual current circuit breaker ensures protection against personal injury.

Residual current operated circuit breaker (RCCB)	
Rated fault current $I_{\Delta N}$	30 mA
Residual current waveform	Type A <ul style="list-style-type: none"> • Independent of line voltage • Triggering of AC fault currents and pulsating DC fault currents

Tbl. 6: Technical requirements for a residual current circuit breaker

Procedure

- ▶ Observe the technical requirements for a residual current circuit breaker.
- ▶ Observe the prescribed inspection periods for electrical protective devices.

5.6 Connecting to mains power supply

DANGER

Danger to life from electric shock

Touching exposed and voltage-bearing elements causes an electric shock. Improper connection of the mains supply leads to the risk of touchable live housing parts. There is a risk to life.

- ▶ Before the installation, check that the connection leads are voltage-free.
- ▶ Make sure that electrical installations are only carried out by qualified electricians.
- ▶ Provide adequate grounding for the device.
- ▶ After connection work, carry out an earthed conductor check.

CAUTION

Risk of injury from entrapment of body parts

After a power failure or a standstill as a result of overheating, the motor restarts automatically. A risk exists of minor injury to fingers and hands (e.g., hematoma), from direct contact with the vacuum flange.

- ▶ Maintain sufficient distance to the vacuum flange during all work.
- ▶ Safely disconnect motor from the mains.
- ▶ Secure the motor against re-start.

NOTICE**Risk of property damage from excess voltage**

Incorrect or excessive mains voltage will destroy the motor.

- ▶ Always observe the motor rating plate specifications.
- ▶ Route the mains connection in accordance with locally applicable provisions.
- ▶ Always provide a suitable mains fuse to protect the motor and supply cable in the event of a fault.
 - Pfeiffer Vacuum recommends type "K" circuit breakers with slow tripping characteristics.

NOTICE**Property damage from the voltage range being set incorrectly**

Recommissioning after longer downtimes of the vacuum pump or after changing the oil requires the current settings to be checked.

- ▶ Before switching the vacuum pump on each time, check the currently set voltage range.
- ▶ Make changes to the voltage range only after the vacuum pump has been disconnected from the mains.

5.6.1 Removing/attaching upper motor cover

Required tools

- Torx screwdriver, TX 20

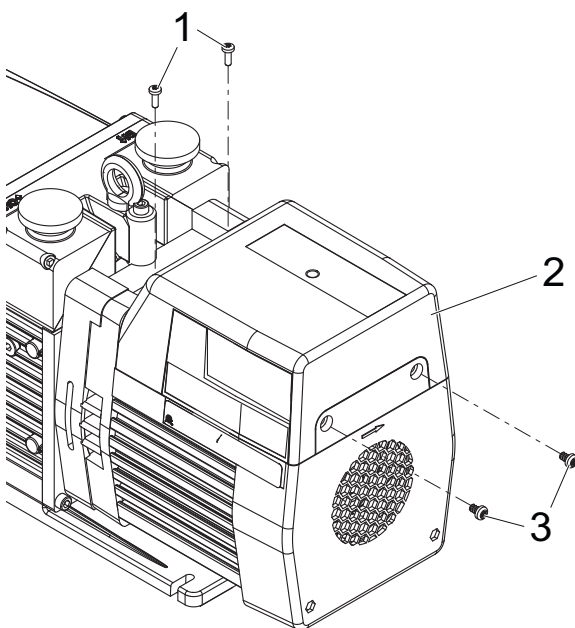


Fig. 10: Removing/attaching upper motor cover

- | | |
|---------------------|------------------|
| 1 Torx screw, 2× | 3 Torx screw, 2× |
| 2 Upper motor cover | |

Procedure

1. The mains voltage must be determined on-site each time before the vacuum pump is installed or moved to a different location.
2. Loosen the Torx screws on the upper motor cover.
3. Remove the upper motor cover.
4. Install the grid connection according to local regulations and the instructions in the following chapter.
5. Attach the upper motor cover.
6. Fasten the Torx screws on the upper motor cover.

5.6.2 Connecting single-phase motors

The vacuum pumps are equipped with an inbuilt thermal protection switch. In event of excess temperature, the protection switch interrupts the motor current, but does not offer a permanent shut-down of the motor. The motor's direction of rotation is set ex factory.

On-site fuse protection

- For the protection of the motor in case of malfunction, always provide fuse protection according to the regulations applicable for the region.

Motor voltage [V], ±10 %	Frequency [Hz]	Motor rating [kW]	Rated current I_N [A]	Max. current I_{max} [A]
100 – 115	50	0.45 0.55	6.0 7.5	48 60
	60	0.55 0.65	7.0 8.5	56 68
200 – 230	50	0.45 0.55	3.0 3.7	24 30
	60	0.55 0.65	3.5 4.0	28 32

Tbl. 7: Recommended fuse ratings for on-site fuse protection

Switch position:	“LV”	“HV”
Voltage range	100 V – 115 V, 50 Hz 100 V – 115 V, 60 Hz	200 V – 230 V, 50 Hz 200 V – 230 V, 60 Hz

Tbl. 8: Permissible voltage ranges

Prerequisites

- Vacuum pump switched off
- Power cable disconnected
- Upper motor cover removed

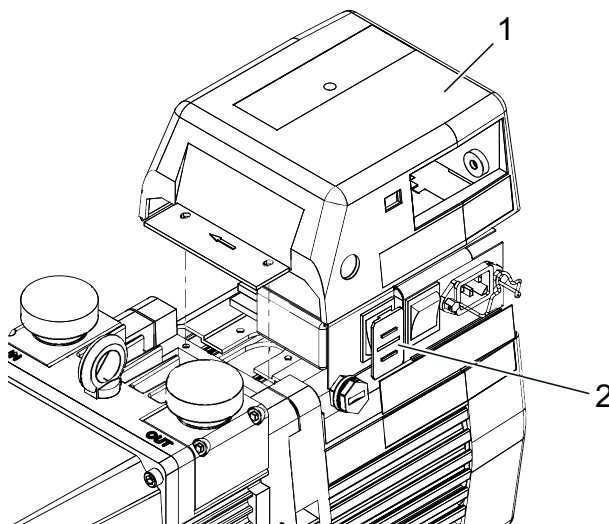


Fig. 11: Example of a voltage selector switch on the motor

- 1 Upper motor cover 2 Voltage selector switch

Changing the voltage range

1. The mains voltage must be determined on-site each time before the vacuum pump is installed or moved to a different location.
2. Remove the cover of the voltage selector switch.
3. Press the voltage selector switch.

4. Turn the cover of the voltage selector switch so that the set voltage range can be read on the outside of the motor cover.
 - The voltage selector switch locks into the correct position when you replace the upper motor cover.
5. Attach the upper motor cover.

5.6.3 Connecting three-phase motor with 6-pin terminal board

NOTICE

Risk of short circuit due to incorrect installation

In the case of incorrect installation, it is possible that the distance between the grounding connection and the motor phase is too short. There is a risk of flashover and short circuit.

- Maintain the required distance of ≥ 6 mm between the grounding connection and the motor phase connection.
- Use an isolated plug for the grounding connection.

NOTICE

Property damage from high starting torque

The specific load behavior of the vacuum pump requires direct on-line starting at full motor power. Engine damage occurs if a different starting circuit is used.

- Always start the motor directly.
- **Never** use a star-delta start-up circuit.

Prerequisites

- Vacuum pump switched off
- Upper motor cover removed

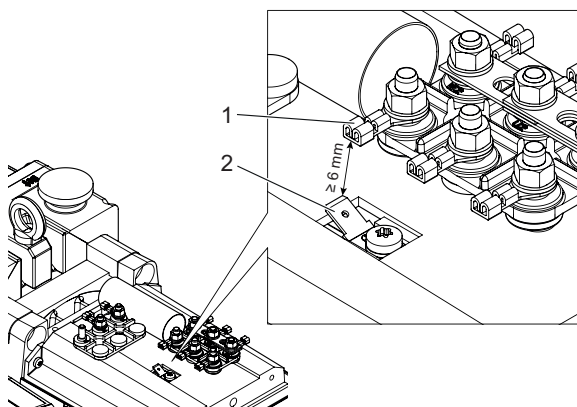


Fig. 12: Ground terminal

- 1 Motor phase connection 2 Ground terminal

Connectors U1 – L2, V1 – L1 and W1 – L3 rotate the motor shaft clockwise when looking at the motor fan.

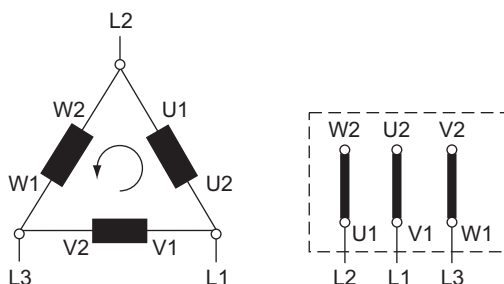


Fig. 13: Delta connection for low voltage

The 3 phases are connected in series, and their connection points connected to the mains. The voltage per phase is equal to the mains voltage, while the mains current is $\sqrt{3}$ times the phase current. The delta connection is marked with the Δ symbol. The voltage between the incoming mains supply lines is called mains voltage. The mains current is the current flowing in the incoming supply lines.

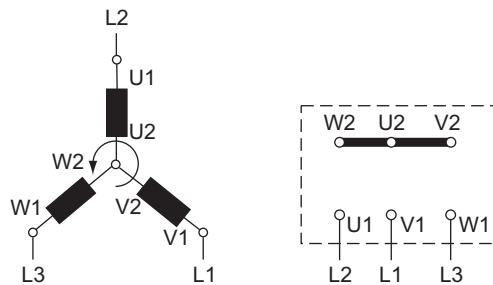


Fig. 14: Star circuit for high voltage

The ends of the 3 phases are connected in the star point. The terminal voltage is $\sqrt{3}$ times the phase voltage, the mains current is equal to the phase current. The star circuit is marked with the Y symbol.

5.6.4 Setting motor protection switch

Motor protection switches are current-dependent protective devices for the drive motors. Protection switches with slow tripping characteristics are suitable. When adjusting the motor protection switch, take into consideration that certain operating conditions (for example, cold pump start) can cause short-term increases in power input.

An increase of 1.5 times the rated current over a 2 minute period is permissible for the drive motors (in accordance with EN 60034-1), without tripping the motor protection switch.

Voltage [V]	Frequency [Hz]	Motor rating [kW]	I_N [A]	I_{max} [A]
200 – 220	50	0.55	2.7	18
240	50	0.55	2.8	19
380 – 415	50	0.55	1.6	11
280	60	0.66	2.8	20
480	60	0.66	1.6	12

Tbl. 9: Motor protection switch settings

Procedure

- Set the appropriate value on the contactor.

5.6.5 Connecting the thermic winding protection

The three phase motor is equipped with a bi-metallic contact in the stator winding. The floating contact is routed to the terminal box for on-site use and has a cut-off temperature of 150 °C.

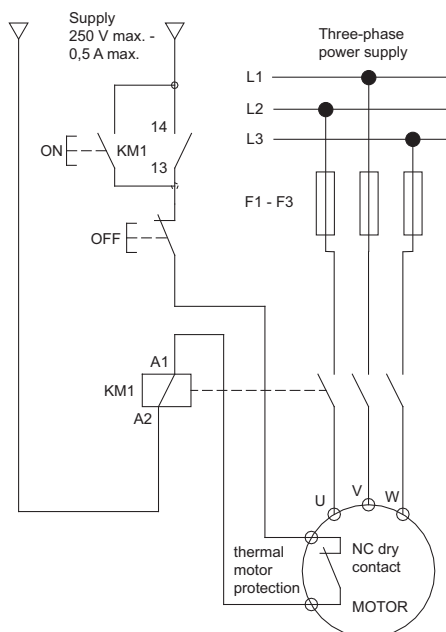


Fig. 15: Thermic winding protection with three-phase motor

Procedure

- ▶ Use the signal for temperature monitoring and, if necessary, for switching off the motor.
- ▶ To protect the motor against thermal overload, use the bi-metallic contact as on the circuit diagram for permanent cutoff.

5.6.6 Checking direction of rotation



Operating fluid leaks out

The direction of rotation must be checked on vacuum pumps with three phase motors. If the direction of rotation for the vacuum pump is incorrect, there is a risk of operating fluid escaping at the vacuum flange.

- Check the direction of rotation before refilling operating fluid.

Procedure

1. Switch on the rotary vane pump briefly (2 to 3 seconds).
 - The motor and motor fan must rotate clockwise (see the arrow on the fan cover).
2. If the direction of rotation is incorrect, exchange the 2 phases on the connection cable.
3. Refill the operating fluid.

5.7 Filling up operating fluid



WARNING

Danger of poisoning from toxic vapors

Igniting and heating synthetic operating fluid generates toxic vapors. Danger of poisoning if inhaled.

- ▶ Observe the application instructions and precautions.
- ▶ Do not allow tobacco products to come into contact with the operating fluid.

NOTICE

Risk of damage due to the use of non-approved operating fluid

Product-specific performance data are not achieved. All liability and warranty claims against Pfeiffer Vacuum are also excluded.

- ▶ Only use approved operating fluids.
- ▶ Only use other application-specific operating fluids after consultation with Pfeiffer Vacuum.

Permitted operating fluid

- P3 for standard applications and non-corrosive media

The operating fluid type is listed on the rating plate

- Please refer to rating plate for type and quantity of intended operating fluid.

Consumables

- Operating fluid of the vacuum pump

Required tools

- Allen key, **WAF 10**
- Calibrated torque wrench (tightening factor ≤ 2.5)

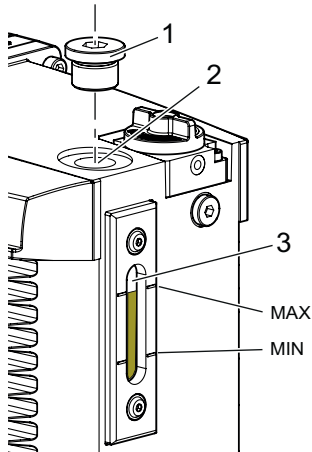


Fig. 16: Filling up operating fluid

- | | |
|-----------------------------------|---------------|
| 1 Filler screw incl. sealing ring | 3 Sight glass |
| 2 Filler hole | |

Procedure

1. Unscrew the filler screw.
 - Be careful with the sealing ring.
2. Refill the operating fluid:
 - Initial filling with cold vacuum pump: A maximum of 3/4 of the min./max. range.
3. Screw in the filler screw.
 - Tightening torque: **10 Nm**

6 Operation

6.1 Commissioning vacuum pump

WARNING

Danger of poisoning due to toxic process media escaping from the exhaust pipe

During operation with no exhaust line, the vacuum pump allows exhaust gases and vapors to escape freely into the air. There is a risk of injury and fatality due to poisoning in processes with toxic process media.

- ▶ Observe the pertinent regulations for handling toxic process media.
- ▶ Safely purge toxic process media via an exhaust line.
- ▶ Use appropriate filter equipment to separate toxic process media.

CAUTION

Danger of injury from bursting as a result of high pressure in the exhaust line

Faulty or inadequate exhaust pipes lead to dangerous situations, e.g. increased exhaust pressure. There is a danger of bursting. Injuries caused by flying fragments, the escaping of high pressure, and damage to the unit cannot be excluded.

- ▶ Route the exhaust line without shut-off units.
- ▶ Observe the permissible pressures and pressure differentials for the product.
- ▶ Check the function of the exhaust line on a regular basis.

Procedure

- ▶ Check the operating fluid in the sight glass.
- ▶ Compare the voltage and frequency specifications on the motor rating plate with the available mains voltage and frequency.
- ▶ Protect the vacuum pump from sucking in contamination using suitable measures.
- ▶ Check the operating fluid at regular intervals.
- ▶ Check the exhaust connection for free passage (max. permissible pressure: 1,500 hPa absolute).

6.2 Switching on vacuum pump

CAUTION

Risk of injury from entrapment of body parts

After a power failure or a standstill as a result of overheating, the motor restarts automatically. A risk exists of minor injury to fingers and hands (e.g., hematoma), from direct contact with the vacuum flange.

- ▶ Maintain sufficient distance to the vacuum flange during all work.
- ▶ Safely disconnect motor from the mains.
- ▶ Secure the motor against re-start.

CAUTION

Danger of injury if hair or loose clothing is pulled in

There is a danger of injury from getting pulled in at rotating parts of the fan.

- ▶ Do not wear loose-fitting jewelry, or hide it under clothing.
- ▶ Wear close-fitting clothing.
- ▶ Use a hair net if necessary.

CAUTION

Danger of burns on hot surfaces

Depending on the operating and ambient conditions, the surface temperature of the vacuum pump can increase to above 70 °C. If access to the vacuum pump is unrestricted, there is a danger of burns due to contact with hot surfaces.

- ▶ Install suitable touch protection if the vacuum pump is unrestrictedly accessible.
- ▶ Allow the vacuum pump to cool down before carrying out any work.
- ▶ Contact Pfeiffer Vacuum for suitable touch protection in system solutions.

NOTICE

Risk of damage to the drive from increased motor current consumption

At an intake pressure of approximately 300 hPa and under unfavorable operating conditions (such as for example exhaust side counterpressure), the power input exceeds the rated current.

- ▶ Limit the maximum power input of 1.5 times the rated current to max. 2 minutes (in accordance with EN 60034-1).



Cycle operation

Cycle operation with maximum 10 cycles per hour is possible.

Longer operating phases and short downtimes permit a functionally safe operating condition of the vacuum pump.

Operating conditions

- The optimal operating condition of the vacuum pump is continuous operation.
- When pumping down dry gases, no special precautions are required.
- Low final pressures are possible with the gas ballast valve closed.

Switching on vacuum pump

1. If required, switch vacuum pump on in each pressure range.
2. Switch vacuum pump on at mains switch, or, in the case of three-phase motors, on site via a protective circuit.
3. Prior to process start, allow vacuum pump to warm up for approx. 30 minutes with vacuum connection closed.

Checking operating fluid level

1. Regularly check operating fluid level while vacuum pump is running and at operating temperature.
2. Make sure that the fill level is within the markings on the sight glass frame.
3. Check operating fluid fill level daily during continuous operation, and every time vacuum pump is switched on.

6.3 Operating rotary vane pump with gas ballast

NOTICE

Risk of damage from condensation in vacuum pump

During operation without gas ballast, condensation may form as a result of the vapor compatibility of the vacuum pump being exceeded.

- ▶ Pump condensable vapors only when the vacuum pump is warm and the gas ballast valve open.
- ▶ Allow the vacuum pump to run on after process end for another 30 minutes with the gas ballast valve open.
 - This cleans the operating fluid and protects the vacuum pump against corrosion.

The gas ballast valve supplies air to the working chamber of the vacuum pump periodically at the beginning of the compression phase. When pumping down vapors, this air prevents condensation within certain limits in the vacuum pump.

Behavior with process gases with condensable vapors

- ▶ Operate the vacuum pump with gas ballast, i.e. with the gas ballast valve open.

6.3.1 Gas ballast valve – standard version


No intermediate settings possible

An intermediate setting between open and closed is not possible.

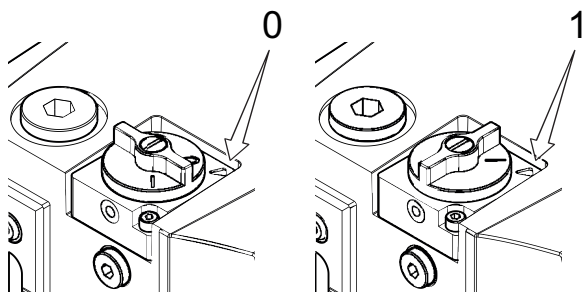


Fig. 17: Gas ballast valve, standard version

0 GBV closed

1 GBV open

Open gas ballast valve

- To open the gas ballast valve, turn its knob up to the stop in position “1”.

Closing gas ballast valve

- To close the gas ballast valve, turn its knob up to the stop in position “0”.

6.3.2 Gas ballast valve with inert gas connection

NOTICE
Property damage from impermissibly high inert gas pressure

Increased inert gas pressure compromises operational reliability of the vacuum pump, and causes an increase in power input and operating temperature.

- Observe the maximum permissible inert gas pressure of **1500 hPa (absolute)**.
- Dose the inert gas quantity with the dosing screw on the gas ballast valve or on site.

NOTICE
Property damage due to inert gas intake during vacuum pump standstill

Continued inert gas intake after switching off the vacuum pump will expel the oil film in the pump system, resulting in damage during restart.

- After switching off the vacuum pump, close the supply of inert gas at the gas ballast valve or by closing the on-site gas supply.


No intermediate settings possible

An intermediate setting between open and closed is not possible.

For some processes, Pfeiffer Vacuum recommends the addition of inert gas to dilute the process gas and, within certain limits, prevent condensation in the vacuum pump.

Required consumables

- Inert gas, e.g., nitrogen (N₂)

Required aids

- Hose (external diameter 6 mm)
- Max. inert gas pressure **1500 hPa (absolute)**

Accessories required

- L push-in fitting (order number: P 0996 105)

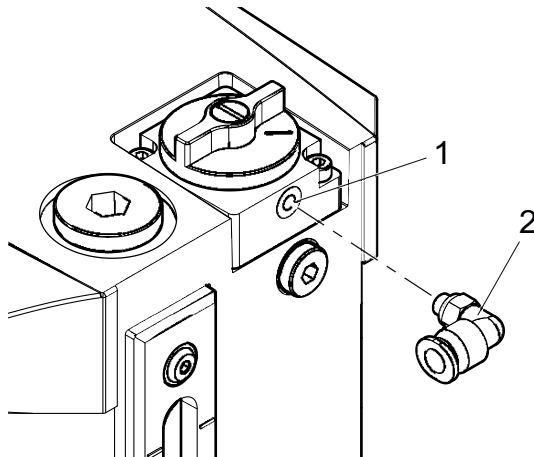


Fig. 18: Inert gas connection on gas ballast valve

- 1 Inert gas connection 2 L push-in fitting

Connecting gas ballast valve with inert gas connection

1. Screw in the L push-in fitting on the inert gas connection.
2. Connect a hose (external diameter 6 mm) to the inert gas connection, or utilize the M5 threaded connector directly.

Selecting an inert gas and setting the inert gas pressure

1. Select the type and quantity of the inert gas used according to the specific process.
2. Consult Pfeiffer Vacuum if necessary.
3. Set the on-site inert gas pressure to **max. 1500 hPa (absolute)**.
4. Set the desired on-site quantity of inert gas.

Open gas ballast valve

- To open the gas ballast valve, turn its knob up to the stop in position “1”.

Closing gas ballast valve

- To close the gas ballast valve, turn its knob up to the stop in position “0”.

6.4 Refilling operating fluid

⚠ CAUTION

Scalding from hot operating fluid

Danger of burns when draining operating fluid if it comes into contact with the skin.

- Wear protective equipment.
- Use a suitable collection receptacle.



Recommendation

Refill with operating fluid before the minimum fill level is reached.

Prerequisite

- Vacuum pump switched off

Consumables

- Operating fluid of the vacuum pump

Required tools

- Allen key, **WAF 10**
- Calibrated torque wrench (tightening factor ≤ 2.5)

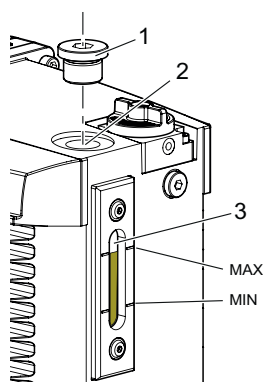


Fig. 19: Refilling operating fluid

- | | |
|-----------------------------------|---------------|
| 1 Filler screw incl. sealing ring | 3 Sight glass |
| 2 Filler hole | |

Procedure

1. Unscrew the filler screw.
 - Be careful with the sealing ring.
2. Top up operating fluid up to the “Max.” marking.
3. Screw in the filler screw again.
 - Tightening torque: **10 Nm**

6.5 Switching off vacuum pump

NOTICE

Contamination from operating fluid backflow

After the vacuum pump is switched off, there is a risk that the connected vacuum system can become contaminated by backflow. The safety valve on the vacuum pump is not suitable for longer-term sealing.

- ▶ Install an additional shut-off valve in the intake line.
- ▶ Shut off the intake line immediately after switching off the vacuum pump.

Procedure

1. If required, switch the vacuum pump off in each pressure range.
2. Switch the mains switch off or securely disconnect the drive motor from the mains.
 - The vacuum safety valve closes automatically when the vacuum pump is switched off, preventing the backflow of gas and operating fluid into the intake line.
3. Install an additional shut-off valve in the intake line to ensure that the vacuum is maintained in the vacuum chamber.

7 Maintenance

7.1 Maintenance instructions

WARNING

Health hazard through poisoning from toxic contaminated components or devices

Toxic process media result in contamination of devices or parts of them. During maintenance work, there is a risk to health from contact with these poisonous substances. Illegal disposal of toxic substances causes environmental damage.

- ▶ Take suitable safety precautions and prevent health hazards or environmental pollution by toxic process media.
- ▶ Decontaminate affected parts before carrying out maintenance work.
- ▶ Wear protective equipment.

WARNING

Tilting danger! Serious injury due to tilting of the product

There is a danger of the vacuum pump not attached tipping over due to changes in the center of gravity or incorrect loading. Serious injuries due to trapping or crushing of limbs, e.g. feet, are the result.

- ▶ Do not use the vacuum pump as a climbing aid.
- ▶ Do not exert any force on the product.
- ▶ Ensure that the product has a safe centre of gravity, when mounting components.
- ▶ Wear protective equipment, e.g. protective shoes

CAUTION

Risk of injury from entrapment of body parts

After a power failure or a standstill as a result of overheating, the motor restarts automatically. A risk exists of minor injury to fingers and hands (e.g., hematoma), from direct contact with the vacuum flange.

- ▶ Maintain sufficient distance to the vacuum flange during all work.
- ▶ Safely disconnect motor from the mains.
- ▶ Secure the motor against re-start.

CAUTION

Danger of injury if hair or loose clothing is pulled in

There is a danger of injury from getting pulled in at rotating parts of the fan.

- ▶ Do not wear loose-fitting jewelry, or hide it under clothing.
- ▶ Wear close-fitting clothing.
- ▶ Use a hair net if necessary.

NOTICE

Damage from incorrect maintenance work

Unprofessional work on the vacuum pump will lead to damage for which Pfeiffer Vacuum accepts no liability.

- ▶ Ensure that only the following categories of persons are authorized to perform servicing tasks:
 - Pfeiffer Vacuum employees with corresponding qualifications.
 - Persons who have undergone training from Pfeiffer Vacuum and have subsequently taken part in refresher courses at intervals of no more than every two years.
 - Persons who have been awarded official certification in accordance with Article 14 (6) BetrSichV (Ordinance on Industrial Safety and Health).
- ▶ We recommend taking advantage of our service training offering.

The following section describes the tasks for cleaning and maintaining the vacuum pump. More advanced works are described in the service instructions.

Prerequisites

- Vacuum pump switched off
- Vacuum pump vented to atmospheric pressure
- Vacuum pump cooled

Preparing maintenance

- ▶ Disconnect the drive motor from the mains.
- ▶ Secure the motor against switching back on.
- ▶ For maintenance work, only dismantle the vacuum pump to the extent needed.
- ▶ Dispose of used operating fluid according to applicable regulations in each case.
- ▶ When using synthetic operating fluid, please observe the associated application instructions.
- ▶ Only clean the pump parts using industrial alcohol, isopropanol or similar media.

7.2 Checklist for inspection and maintenance



Maintenance frequency and service lives

Maintenance frequency and service lives are process-dependent. Chemical and thermic loads or contamination reduce the recommended reference values.

- Determine the specific service lives during the first operating interval.
- Consult with Pfeiffer Vacuum Service if you wish to reduce the maintenance frequency.



Spare part packages

Detailed descriptions of the spare part packages and the order numbers: [\(see chapter "Spare parts", page 55\)](#).

You can carry out maintenance work at **maintenance level 1** yourself.

We recommend Pfeiffer Vacuum Service for carrying out maintenance work at **maintenance level 2** and **maintenance level 3** (revision). If the required intervals listed below are exceeded, or if maintenance work is carried out improperly, no warranty or liability claims are accepted on the part of Pfeiffer Vacuum. This also applies if original spare parts are not used.

Action	Inspection	Maintenance level 1	Maintenance level 2	Maintenance level 3	Required material
described in document	BA	BA	MM	MM	
Interval	daily	≤ yearly	≤ 2 years	≤ 4 years	
Inspection					
Visual and acoustic pump check	■				
Check operating fluid: <ul style="list-style-type: none"> • Check fill level • Check color (contamination) • Check vacuum pump for leaks 					
Check accessories (in accordance with respective operating instructions)	■				
Maintenance level 1 – Operating fluid change					
Clean the outside of the vacuum pump: <ul style="list-style-type: none"> • Pump housing • Cleaning fan cap and cooling fins of motor 		■			Operating fluid spare part package
Changing operating fluid					

Action	Inspection	Maintenance level 1	Maintenance level 2	Maintenance level 3	Required material
described in document	BA	BA	MM	MM	
Interval	daily	≤ yearly	≤ 2 years	≤ 4 years	
Additional activities: <ul style="list-style-type: none"> Remove cap Clean inside of cap and outside of pumping system (without cleaning agent) Remove and clean gas ballast valve, replace wearing parts Clean noise reduction Replace diaphragm on vacuum safety valve 		■ as required			Gas ballast valve spare part package Diaphragm spare part package
Replace filter in external accessory (where present), in accordance with the respective operating instructions		■ as required			
Maintenance level 2 – changing radial shaft seal ring					
<ul style="list-style-type: none"> Partially dismantle the vacuum pump Replace RSSR and coupling spider 			■		Operating fluid spare part package RSSR spare part package
Additional activities (minor overhaul): Dismantle and clean vacuum pump, replace seals and the following wear parts: <ul style="list-style-type: none"> Wear parts, vacuum safety valve (hydraulic piston and diaphragm) Wear parts for exhaust valve (valve buffer) Wear parts for gas ballast valve (valve flap) Vane springs 			■ as required		Operating fluid spare part package Valves/springs spare part package Seals spare part package
Maintenance level 3 / overhaul					
Dismantle and clean vacuum pump, replace seals and all wear parts: <ul style="list-style-type: none"> Vane Valves, springs, and sight glass Silencer nozzle 				■	Spare part package maintenance level 3 / overhaul

Tbl. 10: Maintenance intervals

7.3 Change the operating fluid

WARNING

Health hazard and risk of environmental damage from toxic contaminated operating fluid

Toxic process media can cause operating fluid contamination. When changing the operating fluid, there is a health hazard due to contact with poisonous substances. Illegal disposal of toxic substances causes environmental damage.

- ▶ Wear suitable personal protective equipment when handling these media.
- ▶ Dispose of the operating fluid according to locally applicable regulations.

⚠ CAUTION**Scalding from hot operating fluid**

Danger of burns when draining operating fluid if it comes into contact with the skin.

- ▶ Wear protective equipment.
- ▶ Use a suitable collection receptacle.

**Pfeiffer Vacuum recommends determining the precise service life of the operating fluid within the first maintenance frequency.**

The usable life may deviate from the reference value specified depending on thermic and chemical loads, and the accumulation of suspended particles and condensate in the operating fluid.

**Operating fluid type**

Fundamentally, when filling, refilling, or changing operating fluid, you must always use the operating fluid type specified on the rating plate. Should process conditions change, you can convert to a different operating fluid type.

**Safety data sheets**

You can obtain the safety data sheets for operating fluids from Pfeiffer Vacuum on request, or from the [Pfeiffer Vacuum Download Center](#).

The usable life of operating fluid is dependent on the area of application of the rotary vane vacuum pumps.

Instructions for when operating fluid should be changed

- Vacuum pump does not reach the specified final pressure.
- Operating fluid soiled, milky or unclear
- Mineral operating fluid with thermic aging (color number > 4)

7.3.1 Determining degree of aging of P3 operating fluid**⚠ WARNING****Health hazard and risk of environmental damage from toxic contaminated operating fluid**

Toxic process media can cause operating fluid contamination. When changing the operating fluid, there is a health hazard due to contact with poisonous substances. Illegal disposal of toxic substances causes environmental damage.

- ▶ Wear suitable personal protective equipment when handling these media.
- ▶ Dispose of the operating fluid according to locally applicable regulations.



Scan this QR code or click [here](#) and view a document that will help you determine the degree of aging of the P3 operating fluid in clean processes using a color chart (according to DIN 51578). The document with the number PK0219 can also be obtained from the [Pfeiffer Vacuum Download Center](#) on request.

Prerequisites

- Vacuum pump switched off
- Vacuum pump is vented to atmospheric pressure on the suction side
- Vacuum pump cooled

Required aids

- Test tube
- Pipette with flexible hose
- Allen key, **WAF 10**
- Calibrated torque wrench (tightening factor ≤ 2.5)

Determining degree of aging of P3 operating fluid

1. Unscrew the filler screw.
 - Be careful with the sealing ring.
2. Use the pipette to extract a sample of the operating fluid from the filling port.
3. Pour the sample into a test tube.
4. Check the sample in bright light.
5. If it is a reddish-brown color at the latest (corresponding with color identification number 5), change the operating fluid.
6. Screw in the filler screw.
 - Tightening torque: **10 Nm**

7.3.2 Changing operating fluid**⚠ WARNING****Health hazard and risk of environmental damage from toxic contaminated operating fluid**

Toxic process media can cause operating fluid contamination. When changing the operating fluid, there is a health hazard due to contact with poisonous substances. Illegal disposal of toxic substances causes environmental damage.

- ▶ Wear suitable personal protective equipment when handling these media.
- ▶ Dispose of the operating fluid according to locally applicable regulations.

⚠ CAUTION**Scalding from hot operating fluid**

Danger of burns when draining operating fluid if it comes into contact with the skin.

- ▶ Wear protective equipment.
- ▶ Use a suitable collection receptacle.

**Cleaning by changing the operating fluid**

Pfeiffer Vacuum recommends, in cases of heavy contamination with process residues, cleaning the inside of the vacuum pump with several operating fluid changes.

Prerequisites

- Vacuum pump switched off
- Vacuum pump vented to atmospheric pressure
- Vacuum pump has cooled so that it can be touched
- Operating fluid still warm

Spare parts required

- Operating fluid spare part package

Required consumables

- Operating fluid of the vacuum pump

Required tools

- Allen key, **WAF 10**
- Calibrated torque wrench (tightening factor ≤ 2.5)

Required aids

- Collection receptacle (> 1.5 l)

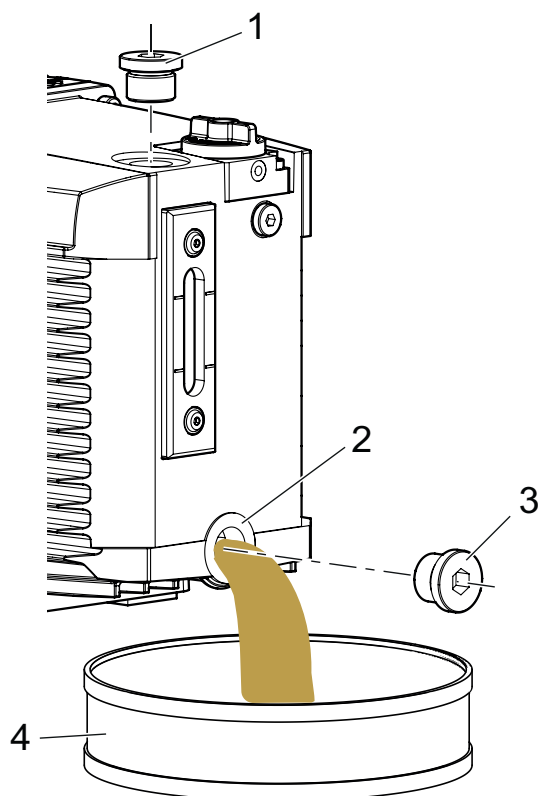


Fig. 20: Draining operating fluid

- | | |
|-----------------------------------|----------------------------------|
| 1 Filler screw incl. sealing ring | 3 Drain screw incl. sealing ring |
| 2 Drain hole | 4 Collection receptacle |

Draining operating fluid

1. Unscrew the filler screw.
 - Be careful with the sealing ring.
2. Place a collection receptacle below the drain hole.
3. Unscrew the drain screw.
 - Be careful with the sealing ring.
4. Allow operating fluid to drain into collection receptacle.

Agitating remaining operating fluid

1. Screw in the filler screw hand tight.
2. Screw in the drain screw hand tight.
3. Switch on the vacuum pump with the vacuum flange open for a maximum of 5 seconds.

Draining remaining operating fluid

1. Unscrew the drain screw.
 - Be careful with the sealing ring.
2. Gently tilt the vacuum pump.
3. Drain remaining operating fluid.
4. Screw in the drain screw hand tight.
5. Dispose of old operating fluid according to valid regulations.

Filling up fresh operating fluid

1. Screw the drain screw in up to the stop.
 - Tightening torque: **10 Nm**
2. Unscrew the filler screw.
 - Be careful with the sealing ring.
3. Fill new operating fluid.
4. Check level.
5. Screw the drain screw in completely.
 - Tightening torque: **10 Nm**

7.3.3 Rinsing and cleaning rotary vane pump



Cleaning by changing the operating fluid

Pfeiffer Vacuum recommends, in cases of heavy contamination with process residues, cleaning the inside of the vacuum pump with several operating fluid changes.

Prerequisite

- Fresh operating fluid filled

Required tools

- Allen key, **WAF 5**
- Allen key, **WAF 10**
- Calibrated torque wrench (tightening factor ≤ 2.5)

Spare parts required

- Operating fluid spare part package

Required aids

- Collection receptacle (> 1.5 l)

Changing operating fluid for cleaning

1. Operate the vacuum pump with the gas ballast open, until it is warm.
2. Perform an operating fluid change.
3. Check the pollution level and repeat the changing of the operating fluid if necessary.
4. Replace the corresponding filter elements wherever the accessory is installed.

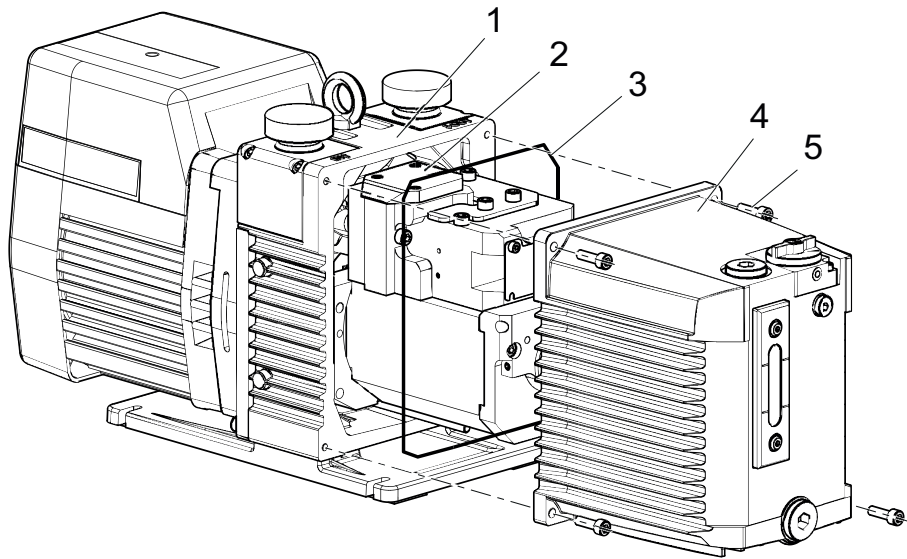


Fig. 21: Removing/fitting the cap on the rotary vane pump

- | | |
|------------------|-----------------------------|
| 1 Stand | 4 Cap |
| 2 Pumping system | 5 Hexagon socket screw (4×) |
| 3 O-ring | |

Removing the cap

1. Drain the operating fluid.
2. Unscrew the hexagon socket screws from the cap.
3. Remove the cap from the stand in axial direction.
 - Take care with the o-ring between cap and stand.
4. Collect any leaking operating fluid.
5. Dispose of operating fluid according to applicable regulations.

Cleaning the pumping system and cap

1. Clean the pumping system from the outside without cleaning agent.
2. Clean the cap from the inside without cleaning agent.

Installing cap

1. Insert the O-ring in the groove in the cap.
2. Install cap on stand.
3. Tighten the hexagon socket screws.
 - Tightening torque: **5.0 Nm**.

Filling up fresh operating fluid

1. Screw the drain screw in up to the stop.
 - Tightening torque: **10 Nm**
2. Unscrew the filler screw.
 - Be careful with the sealing ring.
3. Fill new operating fluid.
4. Check level.
5. Screw the drain screw in completely.
 - Tightening torque: **10 Nm**

7.4 Removing and cleaning the gas ballast valve

The gas ballast valve is soiled if the vacuum pump takes in ambient air containing dust.

7.4.1 Removing gas ballast valve

Required tools

- Allen key, **WAF 3**

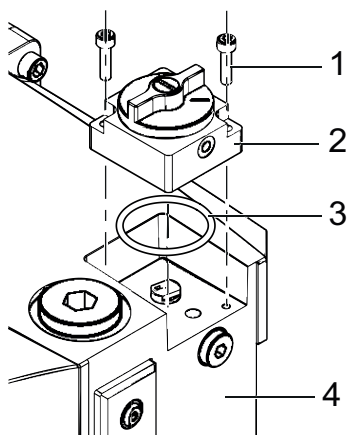


Fig. 22: Removing gas ballast valve

- | | |
|-----------------------|----------------------|
| 1 Cylinder screw (2×) | 3 O-ring 32 × 2.5 mm |
| 2 Valve housing | 4 Cap |

Procedure

1. Unscrew cylinder screws.
2. Remove valve housing from cover.
3. Be careful with the o-ring.

7.4.2 Disassembling and cleaning gas ballast valve

Required tools

- Allen key, **WAF 3**
- Slot-head screwdriver, **7 mm**

Spare parts required

- Gas ballast valve spare part package

Required consumables

- Paper towels
- Isopropanol, as required


Do not loosen dowel pins

Do not loosen the two dowel pins on the top and bottom side of the valve housing.

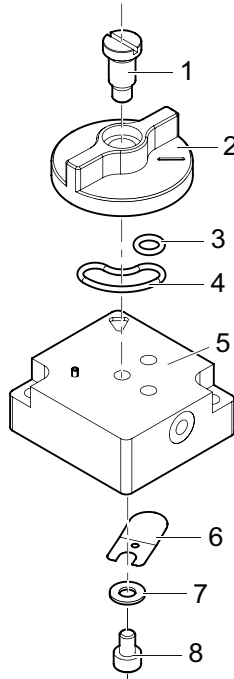


Fig. 23: Individual parts of the gas ballast valve

- | | |
|---------------------|------------------|
| 1 Special screw | 5 Valve housing |
| 2 Rotary knob | 6 Plate spring |
| 3 O-ring, 5×1.5 mm | 7 Washer |
| 4 O-ring, 15×1.5 mm | 8 Cylinder screw |

Procedure

1. Unscrew cylinder screw from valve housing bottom side.
2. Remove the washer and leaf spring.
3. Unscrew and remove the special screw.
4. Remove rotary knob.
5. Remove the o-rings.
6. Clean all parts and check parts for wear.
7. Replace the spare parts from the spare part package.

7.4.3 Removing and cleaning silencer nozzle

The silencer nozzle is installed below the gas ballast valve. The nozzle has a type-specific opening. Clean the nozzle in case of contamination.

Prerequisite

- Gas ballast filter removed

Required tools

- Open-end wrench, **WAF 8**

Required consumables

- Compressed air

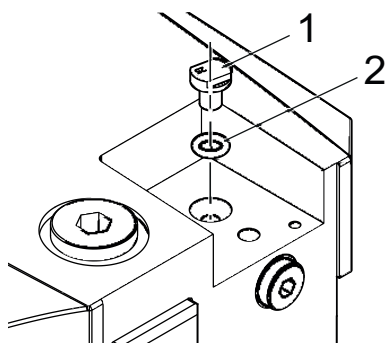


Fig. 24: Remove silencer nozzle

- 1 Silencer nozzle 2 O-ring

Procedure

1. Unscrew silencer nozzle.
 - Be careful with the o-ring.
2. Clean silencer nozzle with compressed air.
3. Screw silencer nozzle back in up to stop.
 - Be careful with the o-ring.

7.4.4 Assembling and installing gas ballast valve

Required tools

- Allen key, **WAF 3**
- Slot-head screwdriver, **7 mm**
- Calibrated torque wrench (tightening factor ≤ 2.5)

Required consumables

- Operating fluid of rotary vane pump

Assemble gas ballast valve

1. Wet the o-rings slightly with the operating fluid used.
2. Insert the o-rings evenly.
3. Fit the rotary knob.
4. Screw in the special screw.
 - Tightening torque: **2.5 Nm**.
5. Position leaf spring on dowel pin (curvature facing housing).
6. Bias and fixate leaf spring with cylinder screw and washer.
 - Tightening torque: **2.5 Nm**.

Install gas ballast valve

1. Install the complete valve with o-ring in the vacuum pump.
2. Tighten the cylinder screws.
 - Tightening torque: **2.5 Nm**.

7.5 Replacing diaphragm on vacuum safety valve

Prerequisite

- Cap removed

Required tools

- Allen key, **WAF 3**
- Calibrated torque wrench (tightening factor ≤ 2.5)

Spare parts required

- Diaphragm spare part package

Required consumables

- Paper cloths for cleaning off operating fluid

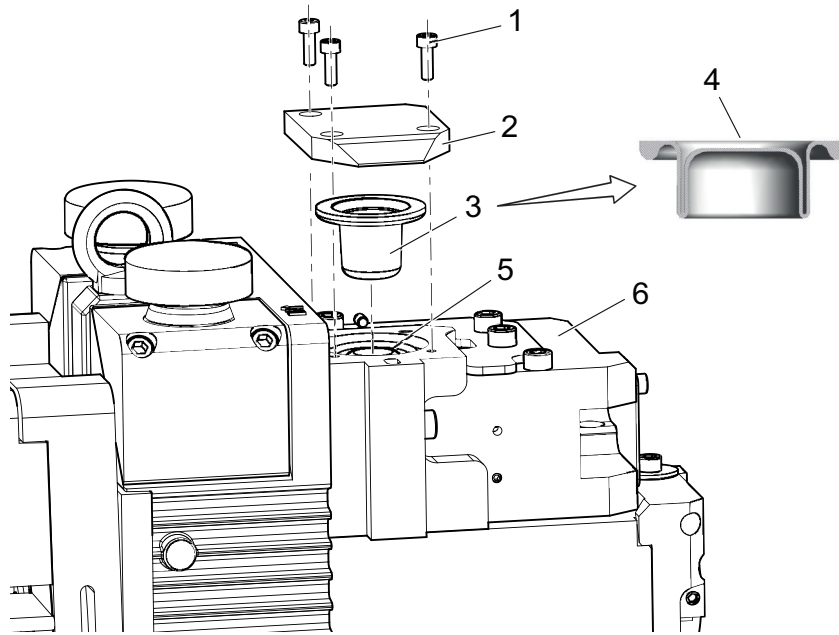


Fig. 25: Diaphragm of vacuum safety valve

- | | |
|--------------------------------|--------------------------------|
| 1 Hexagon socket screw M4 (3x) | 4 Diaphragm installation shape |
| 2 Diaphragm cover | 5 Vacuum safety valve |
| 3 Diaphragm | 6 Pump block |

Dismantling diaphragm cover and diaphragm

1. Unscrew and remove the hexagon socket screw from the top side of the pump block.
2. Remove the diaphragm cover.
3. Remove the operating fluid above the diaphragm.
4. Remove the diaphragm from its seat in the vacuum safety valve.

Cleaning and replacing parts

1. Clean the diaphragm cover and the holes in the diaphragm cover.
2. Replace the diaphragm.

Installing diaphragm cover and diaphragm

1. Make sure the new diaphragm has the right shape for installation.
2. Install the diaphragm.
 - Guide the diaphragm bead into the gap on the vacuum safety valve.
3. Ensure correct seating of the edge of the diaphragm.
4. Fasten the diaphragm cover with the hexagon socket screws.
5. Tighten the hexagon socket screws.
 - Tightening torque: **2.5 Nm**

8 Decommissioning

8.1 Shutting down for longer periods

Before shutting down the vacuum pump, observe the following instructions to adequately protect the interior of the vacuum pump (suction chamber) from corrosion:

Procedure

1. Switch off the vacuum pump.
2. Vent the vacuum pump.
3. Allow the vacuum pump to cool down.
4. Change the operating fluid.
5. Start the vacuum pump and take it up to operating temperature in order to wet the inside of the pumping system with fresh operating fluid.
6. Fill the vacuum pump to above the “**max.**” mark with operating fluid, up to the upper edge of the sight glass.
7. Seal the vacuum and exhaust flanges as well as any other openings with blank flanges from the Pfeiffer Vacuum [accessories range](#).
8. Store the vacuum pump in dry, dust-free rooms, within the specified ambient conditions.
9. Pack the vacuum pump together with a drying agent in a plastic bag, and seal the vacuum pump airtight if it is to be stored in rooms with damp or aggressive atmospheres.
10. For longer storage periods (> 2 years), Pfeiffer Vacuum recommends changing the operating fluid again prior to recommissioning.

8.2 Recommissioning

NOTICE

Risk of damage to vacuum pump as a result of operating fluid aging

The operating fluid usability is limited (max. 2 years). Prior to recommissioning, following a shutdown of **2 years or more**, carry out the following work.

- ▶ Change the operating fluid.
- ▶ Change the radial shaft seal rings and other elastomer parts if required.
- ▶ Observe the maintenance instructions – consult Pfeiffer Vacuum if necessary.



Ejection of operating fluid

Overfilled operating fluid will be ejected at the exhaust connection when starting up the vacuum pump.

- Reduce the operating fluid level to the normal level before recommissioning.

9 Recycling and disposal

WARNING

Health hazard through poisoning from toxic contaminated components or devices

Toxic process media result in contamination of devices or parts of them. During maintenance work, there is a risk to health from contact with these poisonous substances. Illegal disposal of toxic substances causes environmental damage.

- ▶ Take suitable safety precautions and prevent health hazards or environmental pollution by toxic process media.
- ▶ Decontaminate affected parts before carrying out maintenance work.
- ▶ Wear protective equipment.



Environmental protection

You **must** dispose of the product and its components in accordance with all applicable regulations for protecting people, the environment and nature.

- Help to reduce the wastage of natural resources.
- Prevent contamination.

9.1 General disposal information

Pfeiffer Vacuum products contain materials that you must recycle.

- ▶ Dispose of our products according to the following:
 - Iron
 - Aluminium
 - Copper
 - Synthetic
 - Electronic components
 - Oil and fat, solvent-free
- ▶ Observe the special precautionary measures when disposing of:
 - Fluoroelastomers (FKM)
 - Potentially contaminated components that come into contact with media

9.2 Dispose of rotary vane pump

Pfeiffer Vacuum rotary vane pumps contain materials that you must recycle.

1. Fully drain the lubricant.
2. Dismantle the motor.
3. Decontaminate the components that come into contact with process gases.
4. Separate the components into recyclable materials.
5. Recycle the non-contaminated components.
6. Dispose of the product or components in a safe manner according to locally applicable regulations.

10 Malfunctions

CAUTION

Risk of injury from entrapment of body parts

After a power failure or a standstill as a result of overheating, the motor restarts automatically. A risk exists of minor injury to fingers and hands (e.g., hematoma), from direct contact with the vacuum flange.

- ▶ Maintain sufficient distance to the vacuum flange during all work.
- ▶ Safely disconnect motor from the mains.
- ▶ Secure the motor against re-start.

CAUTION

Danger of burns on hot surfaces

In the event of a fault, the surface temperature of the vacuum pump can increase to above 105 °C.

- ▶ Allow the vacuum pump to cool down before carrying out any work.
- ▶ Wear personal protective equipment if necessary.

CAUTION

Danger of injury from moving parts

After a power failure or a standstill as a result of overheating, the motor restarts automatically. There is a risk of injury to fingers and hands if they enter the operating range of rotating parts.

- ▶ Safely disconnect motor from the mains.
- ▶ Secure the motor against reactivation.
- ▶ Dismantle the vacuum pump for inspection, away from the system if necessary.

NOTICE

Danger of property damage from improper maintenance

Unprofessional work on the vacuum pump will lead to damage for which Pfeiffer Vacuum accepts no liability.

- ▶ We recommend taking advantage of our service training offering.
- ▶ When ordering spare parts, specify the information on the nameplate.

Should malfunctions occur, you can find information about possible causes and how to fix them here:

Problem	Possible causes	Remedy
Vacuum pump will not start up	<ul style="list-style-type: none"> No mains voltage or voltage does not correspond to the motor data 	<ul style="list-style-type: none"> Check the mains voltage and mains fuse. Check the motor switch.
	<ul style="list-style-type: none"> Pump temperature too low 	<ul style="list-style-type: none"> Heat the vacuum pump to > 12 °C.
	<ul style="list-style-type: none"> Thermic protection switch has triggered 	<ul style="list-style-type: none"> Determine and eliminate the cause. Allow the vacuum pump to cool down.
	<ul style="list-style-type: none"> Pumping system contaminated 	<ul style="list-style-type: none"> Clean the vacuum pump. Contact Pfeiffer Vacuum Service.
	<ul style="list-style-type: none"> Pumping system damaged 	<ul style="list-style-type: none"> Clean and maintain the vacuum pump. Contact Pfeiffer Vacuum Service.
	<ul style="list-style-type: none"> Motor faulty 	<ul style="list-style-type: none"> Replace the motor.

Problem	Possible causes	Remedy
Vacuum pump switches off after a while after being started	<ul style="list-style-type: none"> Thermic protection switch of the motor has triggered 	<ul style="list-style-type: none"> Determine and eliminate the cause of overheating. Allow the motor to cool down.
	<ul style="list-style-type: none"> Mains fuse triggered due to overload (e.g. cold start) 	<ul style="list-style-type: none"> Bring vacuum pump to permissible ambient temperature range.
	<ul style="list-style-type: none"> Exhaust pressure too high 	<ul style="list-style-type: none"> Check the exhaust line outlet opening and exhaust side accessories.
Vacuum pump does not reach the specified final pressure	<ul style="list-style-type: none"> Measurement result distorted 	<ul style="list-style-type: none"> Check the measurement instrument. Check the final pressure without system connected.
	<ul style="list-style-type: none"> Vacuum pump or connected accessory contaminated 	<ul style="list-style-type: none"> Clean the vacuum pump. Check the components for contamination.
	<ul style="list-style-type: none"> Operating fluid contaminated 	<ul style="list-style-type: none"> Operate the vacuum pump for an extended period of time with gas ballast valve open, or change the operating fluid.
	<ul style="list-style-type: none"> Operating fluid level too low 	<ul style="list-style-type: none"> Top up the operating fluid.
	<ul style="list-style-type: none"> Leak in system 	<ul style="list-style-type: none"> Locate and eliminate the leak.
	<ul style="list-style-type: none"> Diaphragm on safety valve damaged or faulty 	<ul style="list-style-type: none"> Check the diaphragm. Replace the diaphragm.
	<ul style="list-style-type: none"> Vacuum pump is damaged 	<ul style="list-style-type: none"> Contact Pfeiffer Vacuum Service.
Pumping speed of vacuum pump too low	<ul style="list-style-type: none"> The intake line is not suitably dimensioned 	<ul style="list-style-type: none"> Make sure that connections are short and cross sections adequately dimensioned.
	<ul style="list-style-type: none"> Exhaust pressure too high 	<ul style="list-style-type: none"> Check the exhaust line outlet opening and exhaust side accessories.
	<ul style="list-style-type: none"> Diaphragm on safety valve damaged or faulty 	<ul style="list-style-type: none"> Check the diaphragm. Replace the diaphragm.
Loss of operating fluid	<ul style="list-style-type: none"> Casing seal is not tight 	<ul style="list-style-type: none"> Check and replace the seal.
	<ul style="list-style-type: none"> Radial shaft seal ring (RSSR) not tight 	<ul style="list-style-type: none"> Check and replace the RSSR Check and replace the associated bushing also.
	<ul style="list-style-type: none"> Diaphragm on safety valve damaged or faulty 	<ul style="list-style-type: none"> Check the diaphragm. Replace the diaphragm. Check the intake line for operating fluid contamination.
	<ul style="list-style-type: none"> Operating fluid loss due to operating conditions – no oil mist filter 	<ul style="list-style-type: none"> Install an OME.
Unusual noises during operation	<ul style="list-style-type: none"> Noise reduction is contaminated 	<ul style="list-style-type: none"> Clean the noise reduction or replace it.
	<ul style="list-style-type: none"> Pumping system is contaminated or damaged 	<ul style="list-style-type: none"> Clean and maintain the vacuum pump. Contact Pfeiffer Vacuum Service.
	<ul style="list-style-type: none"> Motor bearing is faulty 	<ul style="list-style-type: none"> Change the motor. Contact Pfeiffer Vacuum Service.

TbI. 11: Troubleshooting for rotary vane pumps

11 Service solutions by Pfeiffer Vacuum

We offer first-class service

High vacuum component service life, in combination with low downtime, are clear expectations that you place on us. We meet your needs with efficient products and outstanding service.

We are always focused on perfecting our core competence – servicing of vacuum components. Once you have purchased a product from Pfeiffer Vacuum, our service is far from over. This is often exactly where service begins. Obviously, in proven Pfeiffer Vacuum quality.

Our professional sales and service employees are available to provide you with reliable assistance, worldwide. Pfeiffer Vacuum offers an entire range of services, from original replacement parts to service contracts.

Make use of Pfeiffer Vacuum service

Whether preventive, on-site service carried out by our field service, fast replacement with mint condition replacement products, or repair carried out in a Service Center near you – you have various options for maintaining your equipment availability. You can find more detailed information and addresses on our homepage, in the section.

You can obtain advice on the optimal solution for you, from your Pfeiffer Vacuum representative.

For fast and smooth service process handling, we recommend the following:



1. Download the up-to-date form templates.
 - Explanations of service requests
 - Service requests
 - Contamination declaration



- a) Remove and store all accessories (all external parts, such as valves, protective screens, etc.).
- b) If necessary, drain operating fluid/lubricant.
- c) If necessary, drain coolant.
2. Complete the service request and contamination declaration.



3. Send the forms by email, fax, or post to your local Service Center.

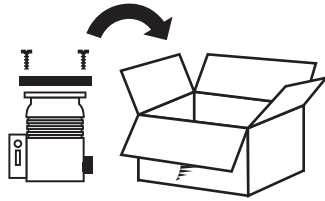


4. You will receive an acknowledgment from Pfeiffer Vacuum.

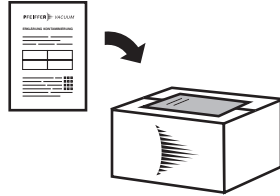
PFEIFFER VACUUM

Submission of contaminated products

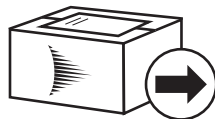
No microbiological, explosive, or radiologically contaminated products will be accepted. Where products are contaminated, or the contamination declaration is missing, Pfeiffer Vacuum will contact you before starting service work. Depending on the product and degree of pollution, **additional decontamination costs** may be incurred.



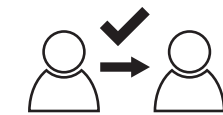
5. Prepare the product for transport in accordance with the provisions in the contamination declaration.
 - a) Neutralize the product with nitrogen or dry air.
 - b) Seal all openings with blind flanges, so that they are airtight.
 - c) Shrink-wrap the product in suitable protective foil.
 - d) Package the product in suitable, stable transport containers only.
 - e) Maintain applicable transport conditions.



6. Attach the contamination declaration to the **outside** of the packaging.



7. Now send your product to your local Service Center.



8. You will receive an acknowledgment/quotation, from Pfeiffer Vacuum.

PFEIFFER VACUUM

Our sales and delivery conditions and repair and maintenance conditions for vacuum devices and components apply to all service orders.

12 Spare parts

12.1 Ordering spare part packages

Ordering spare part packages

- ▶ Have the vacuum pump part number to hand, along with other details from the rating plate if necessary.
- ▶ Install original spare parts only.
- ▶ When ordering the inspection set, observe the respective part number of the diaphragm pump.

Spare part package	Order number			
	DuoVane 6	DuoVane 12	DuoVane 18	DuoVane 22
Spare part package maintenance level 3 / overhaul	PK E32 203 -T	PK E32 202 -T	PK E32 201 -T	PK E32 200 -T
Operating fluid spare part package	PK E39 200 -T	PK E39 200 -T	PK E39 200 -T	PK E39 200 -T
Gas ballast valve spare part package	PK E39 205 -T	PK E39 205 -T	PK E39 205 -T	PK E39 205 -T
Diaphragm spare part package	PK E34 210 -T	PK E34 210 -T	PK E34 210 -T	PK E34 210 -T
Radial shaft seal ring (RSSR) spare part package	PK E36 200 -T	PK E36 200 -T	PK E36 200 -T	PK E36 200 -T
Seals spare part package	PK E30 203 -T	PK E30 202 -T	PK E30 201 -T	PK E30 200 -T
Valves and springs spare part package	PK E34 203 -T	PK E34 202 -T	PK E34 201 -T	PK E34 200 -T
Sight glass spare part package	PK E39 206 -T	PK E39 206 -T	PK E39 206 -T	PK E39 206 -T
Vane spare part package	PK E38 203 -T	PK E38 202 -T	PK E38 201 -T	PK E38 200 -T

Tbl. 12: Spare part packages

12.2 Contents of spare part packages

- Spare part package maintenance level 3 / overhaul
 - Radial shaft seal ring (RSSR) spare part package
 - Seals spare part package
 - Valves and springs spare part package
 - Sight glass spare part package
 - Vane spare part package
 - Small parts (e.g. silencer nozzle, filler and drain screws, etc.)
- Operating fluid spare part package
 - Operating fluid P3 (1.4 liters)
- Gas ballast valve spare part package
 - O-rings and leaf spring
- Diaphragm spare part package
 - Cap seal for cleaning oil chamber
 - Diaphragm for the vacuum safety valve
- Radial shaft seal ring (RSSR) spare part package
 - RSSR, bushing, and o-rings
 - Coupling spider
- Seals spare part package
 - All O-rings of the vacuum pump
- Valves and springs spare part package
 - Diaphragm for the vacuum safety valve
 - Wear parts of the gas ballast valve
 - Wear parts of the vacuum safety valve
 - Vane springs
- Sight glass spare part package
 - Sight glass plate
 - O-ring for sight glass plate
- Vane spare part package
 - Vane

13 Accessories



View the [range of accessories for rotary vane pumps](#) on our website.

13.1 Accessory information

Dust separator

Protects the pump against particles from the processes

Condensate separator

Protects the vacuum pump from liquids from intake line or condensate return flow from the exhaust line

Oil mist filter

Prevents oil mist from escaping

Oil return

Guides separated operating fluid from the oil mist eliminator back into the rotary vane pump

Activated carbon filter

When mounted on the intake side, protects the vacuum pump and operating fluid against gaseous inorganic contaminants such as acids and lyes

Catalyser trap

Prevents backflow of operating fluid vapors (mineral oil only) into the vacuum equipment by separating the oil molecules into CO₂ and water

Sorption trap

Uses an absorption medium with an extremely porous surface to absorb water or hydrocarbon from the pumped gas

Cooling trap

For cooling, e.g. with liquid nitrogen. Prevents backflow of any operating fluid vapors through condensation and protects the vacuum pump and operating fluid against vapors from the process

13.2 Ordering accessories

Selection field	Part number
Sorption trap ST 25 S	104107
Oil mist separator OME 25 S	104200
HV angle valve, DN 25 ISO-KF, manually operated, 304/FKM, "A"-dim. 50 mm	ESV-S03100
Cold Trap, LN ₂ , angled, DN 25 ISO-KF, 4" body, stainless steel / FKM	FTNA-4-1002-NWB
Push-in L-fitting, M5 A for tube 6 mm, with sealing NBR	P 0996 105
Oil return unit ODK from OME 25 M to Duo 20	PK 006 082 -T
KAS 25, condensate separator for pumping speeds up to 12 m ³ /h	PK Z10 032
FAK 025, activated carbon filter	PK Z30 006
OME 25 M, oil mist separator for pumping speeds up to 12 m ³ /h	PK Z40 157
SAS 25, dust separator, DN 25 ISO-KF	PK Z60 508
SAS 25 SB, dust separator, DN 25 ISO-KF	PK Z60 527
URB 025, catalytic trap, 230 V	PT U10 760
URB 025, catalytic trap, 115 V	PT U10 761

Tbl. 13: Accessories DuoVane 6 / DuoVane 12

Selection field	Part number
Sorption trap ST 25 S	104107
Oil mist separator OME 25 S	104200

Selection field	Part number
HV angle valve, DN 25 ISO-KF, manually operated, 304/FKM, "A"-dim. 50 mm	ESV-S03100
Cold Trap, LN ₂ , angled, DN 25 ISO-KF, 4" body, stainless steel / FKM	FTNA-4-1002-NWB
Push-in L-fitting, M5 A for tube 6 mm, with sealing NBR	P 0996 105
Oil return unit ODK from OME 25 M to Duo 20	PK 006 082 -T
KAS 25 L, condensate separator for pumping speeds up to 35 m ³ /h	PK Z10 033
FAK 025, activated carbon filter	PK Z30 006
OME 25 ML, oil mist separator for pumping speeds of up to 30 m ³ /h	PK Z40 158
SAS 25, dust separator, DN 25 ISO-KF	PK Z60 508
SAS 25 SB, dust separator, DN 25 ISO-KF	PK Z60 527
URB 025, catalytic trap, 230 V	PT U10 760
URB 025, catalytic trap, 115 V	PT U10 761

Tbl. 14: Accessories DuoVane 18 / DuoVane 22

Consumables	Order number
P3, mineral oil, 1 l	PK 001 106 -T
P3, mineral oil, 5 l	PK 001 107 -T
P3, mineral oil, 20 l	PK 001 108 -T

Tbl. 15: Consumables

14 Technical data and dimensions

14.1 General

Basis for the technical data of Pfeiffer Vacuum rotary vane pumps:

- Specifications according to PNEUROP committee PN5
- ISO 21360-1: 2016: "Vacuum technology - Standard methods for measuring vacuum-pump performance - Part 1: General description"
- Leak test to ascertain the integral leakage rate according to EN 1779: 1999 technique A1; with 20 % helium concentration, 10 s measurement duration
- Sound pressure level according to ISO 3744, class 2

	mbar	bar	Pa	hPa	kPa	Torr mm Hg
mbar	1	$1 \cdot 10^{-3}$	100	1	0.1	0.75
bar	1000	1	$1 \cdot 10^5$	1000	100	750
Pa	0.01	$1 \cdot 10^{-5}$	1	0.01	$1 \cdot 10^{-3}$	$7.5 \cdot 10^{-3}$
hPa	1	$1 \cdot 10^{-3}$	100	1	0.1	0.75
kPa	10	0.01	1000	10	1	7.5
Torr mm Hg	1.33	$1.33 \cdot 10^{-3}$	133.32	1.33	0.133	1

$$1 \text{ Pa} = 1 \text{ N/m}^2$$

Tbl. 16: Conversion table: Pressure units

	mbar l/s	Pa m³/s	sccm	Torr l/s	atm cm³/s
mbar l/s	1	0.1	59.2	0.75	0.987
Pa m³/s	10	1	592	7.5	9.87
sccm	$1.69 \cdot 10^{-2}$	$1.69 \cdot 10^{-3}$	1	$1.27 \cdot 10^{-2}$	$1.67 \cdot 10^{-2}$
Torr l/s	1.33	0.133	78.9	1	1.32
atm cm³/s	1.01	0.101	59.8	0.76	1

Tbl. 17: Conversion table: Units for gas throughput

14.2 Substances in contact with media

Pump parts	Substances in contact with media
Housing	Aluminum
Inlet/exhaust flange	Aluminum
Sight glass	Float glass
Stator/stator flange	Cast iron
Rotor	Cast iron
Vane	Artificial resin compound, polymer
Exhaust valve	Elastomer, stainless steel
Vacuum safety valve	Aluminum, stainless steel, FKM
Gas ballast valve	Aluminum, stainless steel, FKM
Screws	Galvanized steel, stainless steel
Seals	FKM
Radial shaft seal ring (RSSR)	FKM

Tbl. 18: Materials that make contact with the process media

14.3 Technical data

Type designation	DuoVane 6	DuoVane 12	DuoVane 18	DuoVane 22
Connection flange (in)	DN 25 ISO-KF	DN 25 ISO-KF	DN 25 ISO-KF	DN 25 ISO-KF
Connection flange (out)	DN 25 ISO-KF	DN 25 ISO-KF	DN 25 ISO-KF	DN 25 ISO-KF
Pumping speed at 50 Hz	5.5 m³/h	9.5 m³/h	14 m³/h	19.5 m³/h
Pumping speed at 60 Hz	6.5 m³/h	11.8 m³/h	16.9 m³/h	22.5 m³/h
Gas ballast	Yes	Yes	Yes	Yes
Final pressure with gas ballast	$1 \cdot 10^{-2}$ hPa	$1 \cdot 10^{-2}$ hPa	$1 \cdot 10^{-2}$ hPa	$1 \cdot 10^{-2}$ hPa
Final pressure	$3 \cdot 10^{-3}$ hPa	$3 \cdot 10^{-3}$ hPa	$3 \cdot 10^{-3}$ hPa	$3 \cdot 10^{-3}$ hPa
Continuous inlet pressure, max.	50 hPa	50 hPa	50 hPa	50 hPa
Leakage rate safety valve	$1 \cdot 10^{-5}$ Pa m³/s	$1 \cdot 10^{-5}$ Pa m³/s	$1 \cdot 10^{-5}$ Pa m³/s	$1 \cdot 10^{-5}$ Pa m³/s
Exhaust pressure, min.	Atmospheric pressure	Atmospheric pressure	Atmospheric pressure	Atmospheric pressure
Exhaust pressure, max.	1500 hPa	1500 hPa	1500 hPa	1500 hPa
Rotation speed at 50 Hz	1500 rpm	1500 rpm	1500 rpm	1500 rpm
Rotation speed at 60 Hz	1800 rpm	1800 rpm	1800 rpm	1800 rpm
Ambient temperature	12 – 40 °C	12 – 40 °C	12 – 40 °C	12 – 40 °C
Temperature: Shipping	-25 – 55 °C	-25 – 55 °C	-25 – 55 °C	-25 – 55 °C
Continuous gas input temperature, max.	40 °C	40 °C	40 °C	40 °C
Operating altitude, max.	2000 m	2000 m	2000 m	2000 m
Motor type	3-phase motor	3-phase motor	3-phase motor	3-phase motor
Motor protection	Bimetal	Bimetal	Bimetal	Bimetal
Protection degree	IP43	IP43	IP43	IP43
Rated power 50 Hz	0.55 kW	0.55 kW	0.55 kW	0.55 kW
Rated power 60 Hz	0.66 kW	0.66 kW	0.66 kW	0.66 kW
Input voltage(s)	200 – 220 / 240 / 380 – 415 V AC, 50 Hz 280 / 480 V AC (±5 %), 60 Hz	200 – 220 / 240 / 380 – 415 V AC, 50 Hz 280 / 480 V AC (±5 %), 60 Hz	200 – 220 / 240 / 380 – 415 V AC, 50 Hz 280 / 480 V AC (±5 %), 60 Hz	200 – 220 / 240 / 380 – 415 V AC, 50 Hz 280 / 480 V AC (±5 %), 60 Hz
Operating fluid	P3	P3	P3	P3
Operating fluid amount	1.1 l	1.2 l	1.3 l	1.3 l
Cooling method	Air (Forced convection)	Air (Forced convection)	Air (Forced convection)	Air (Forced convection)
Weight: with motor	–	–	–	–

Tbl. 19: Technical data, DuoVane with three phase motor

Type designation	DuoVane 6	DuoVane 12	DuoVane 18	DuoVane 22
Connection flange (in)	DN 25 ISO-KF	DN 25 ISO-KF	DN 25 ISO-KF	DN 25 ISO-KF
Connection flange (out)	DN 25 ISO-KF	DN 25 ISO-KF	DN 25 ISO-KF	DN 25 ISO-KF
Pumping speed at 50 Hz	5.5 m³/h	9.5 m³/h	14 m³/h	19.5 m³/h
Pumping speed at 60 Hz	6.5 m³/h	11.8 m³/h	16.9 m³/h	22.5 m³/h
Gas ballast	Yes	Yes	Yes	Yes
Final pressure with gas ballast	$1 \cdot 10^{-2}$ hPa	$1 \cdot 10^{-2}$ hPa	$1 \cdot 10^{-2}$ hPa	$1 \cdot 10^{-2}$ hPa
Final pressure	$3 \cdot 10^{-3}$ hPa	$3 \cdot 10^{-3}$ hPa	$3 \cdot 10^{-3}$ hPa	$3 \cdot 10^{-3}$ hPa
Continuous inlet pressure, max.	50 hPa	50 hPa	50 hPa	50 hPa
Leakage rate safety valve	$1 \cdot 10^{-5}$ Pa m³/s	$1 \cdot 10^{-5}$ Pa m³/s	$1 \cdot 10^{-5}$ Pa m³/s	$1 \cdot 10^{-5}$ Pa m³/s
Exhaust pressure, min.	Atmospheric pressure	Atmospheric pressure	Atmospheric pressure	Atmospheric pressure
Exhaust pressure, max.	1500 hPa	1500 hPa	1500 hPa	1500 hPa
Rotation speed at 50 Hz	1500 rpm	1500 rpm	1500 rpm	1500 rpm
Rotation speed at 60 Hz	1800 rpm	1800 rpm	1800 rpm	1800 rpm
Ambient temperature	12 – 40 °C	12 – 40 °C	12 – 40 °C	12 – 40 °C
Temperature: Shipping	-25 – 55 °C	-25 – 55 °C	-25 – 55 °C	-25 – 55 °C
Continuous gas input temperature, max.	40 °C	40 °C	40 °C	40 °C
Operating altitude, max.	2000 m	2000 m	2000 m	2000 m
Motor type	1-phase motor	1-phase motor	1-phase motor	1-phase motor
Motor protection	Thermal winding protection	Thermal winding protection	Thermal winding protection	Thermal winding protection
Protection degree	IP40	IP40	IP40	IP40
Rated power 50 Hz	0.45 kW	0.45 kW	0.55 kW	0.55 kW
Rated power 60 Hz	0.55 kW	0.55 kW	0.65 kW	0.65 kW
Input voltage(s)	100 – 115 / 200 – 230 V AC, 50 Hz 100 – 115 / 200 – 230 V AC (±100 %), 60 Hz	100 – 115 / 200 – 230 V AC, 50 Hz 100 – 115 / 200 – 230 V AC (±10 %), 60 Hz	115 – 115 / 200 – 230 V AC, 50 Hz 100 – 115 / – 230 V AC (±10 %), 60 Hz	100 – 115 / 200 – 230 V AC, 50 Hz 100 – 115 / 200 – 230 V AC (±10 %), 60 Hz
Operating fluid	P3	P3	P3	P3
Operating fluid amount	1.1 l	1.2 l	1.3 l	1.3 l
Cooling method	Air (Forced convection)	Air (Forced convection)	Air (Forced convection)	Air (Forced convection)
Weight: with motor	–	–	–	–

Tbl. 20: Technical data, DuoVane with single phase motor

14.4 Dimensions

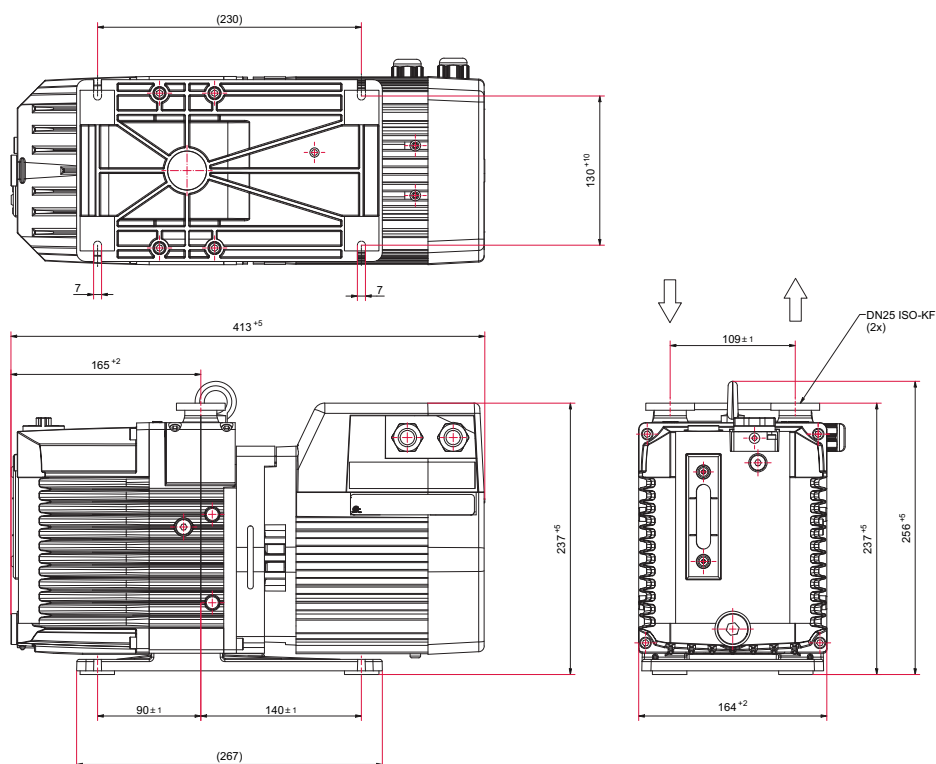


Fig. 26: Dimensions DuoVane 6 with three phase motor
Dimensions in mm

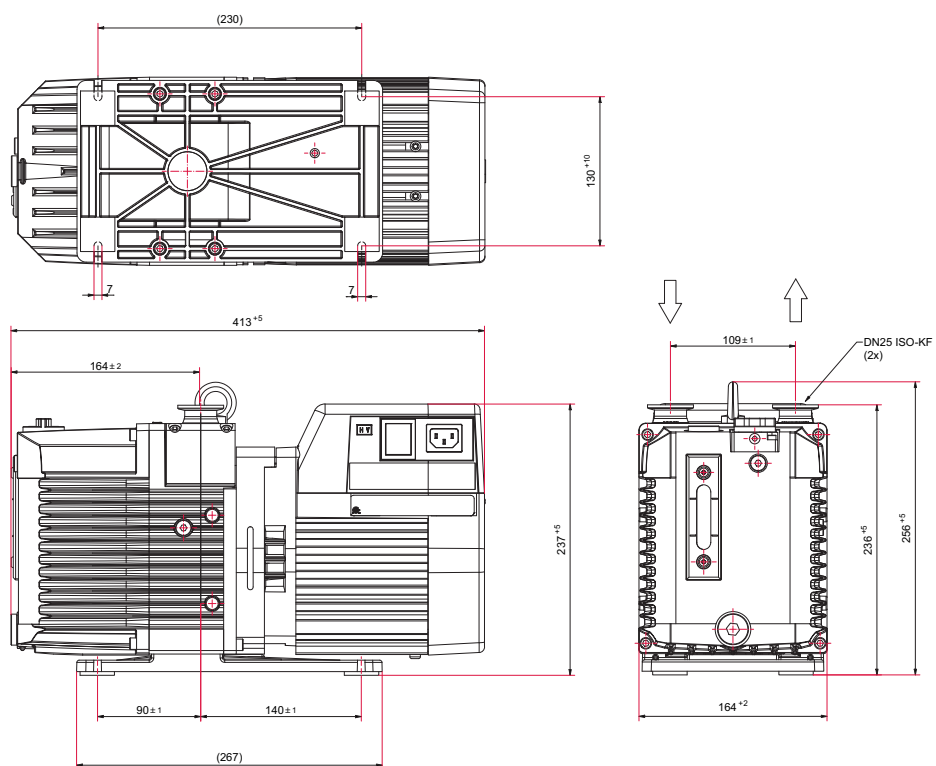


Fig. 27: Dimensions DuoVane 6 with single-phase motor
Dimensions in mm

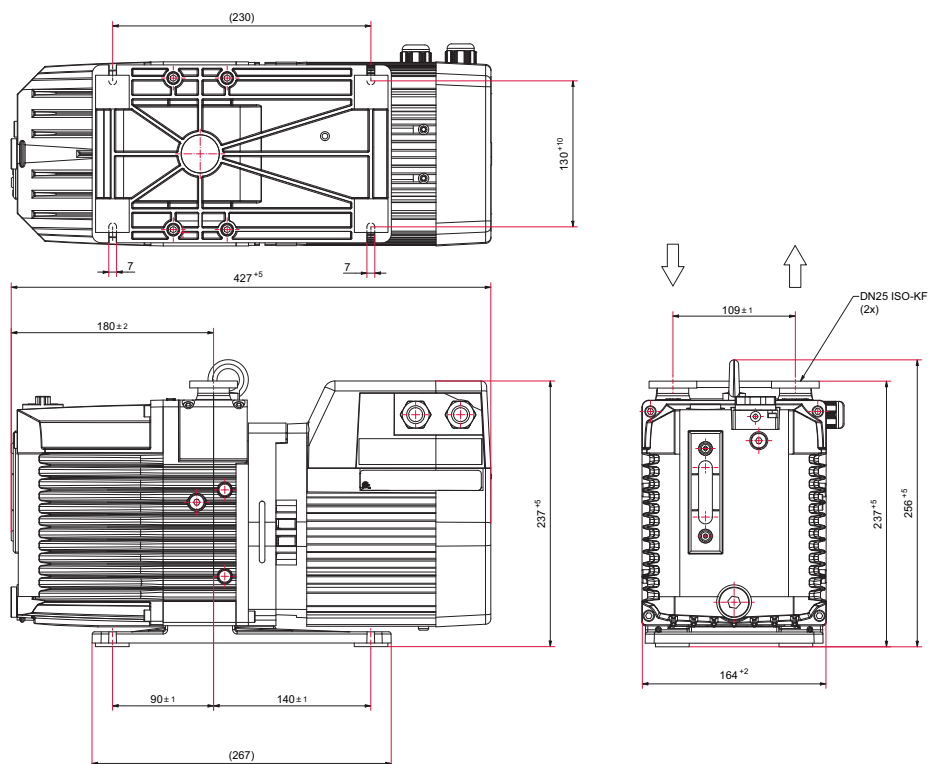


Fig. 28: Dimensions DuoVane 12 with three phase motor
Dimensions in mm

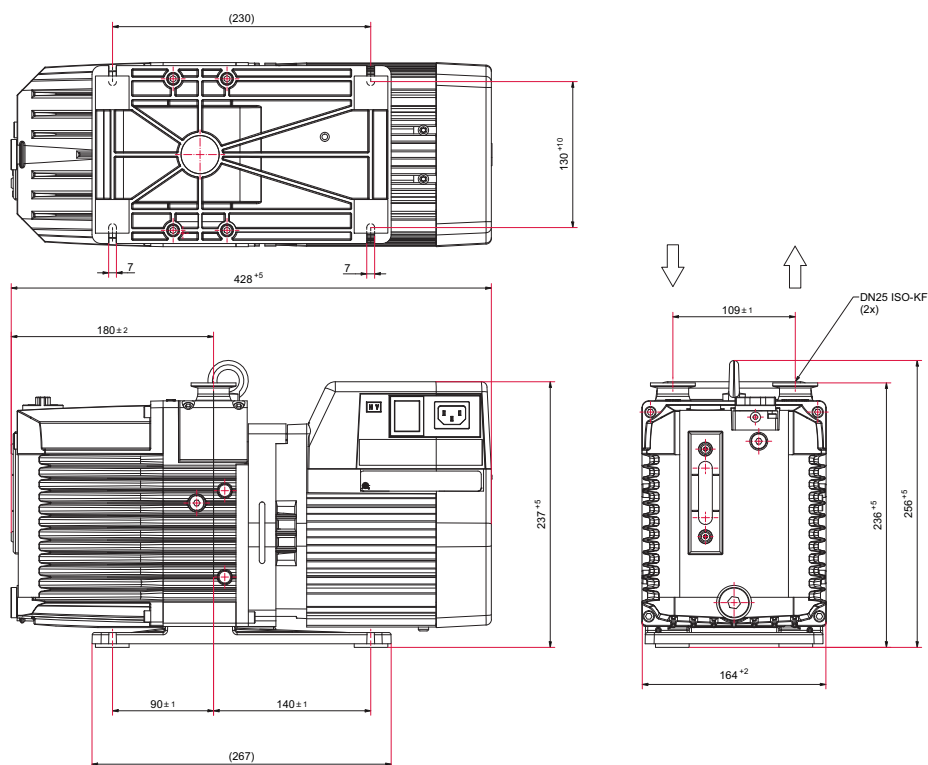


Fig. 29: Dimensions DuoVane 12 with single-phase motor
Dimensions in mm

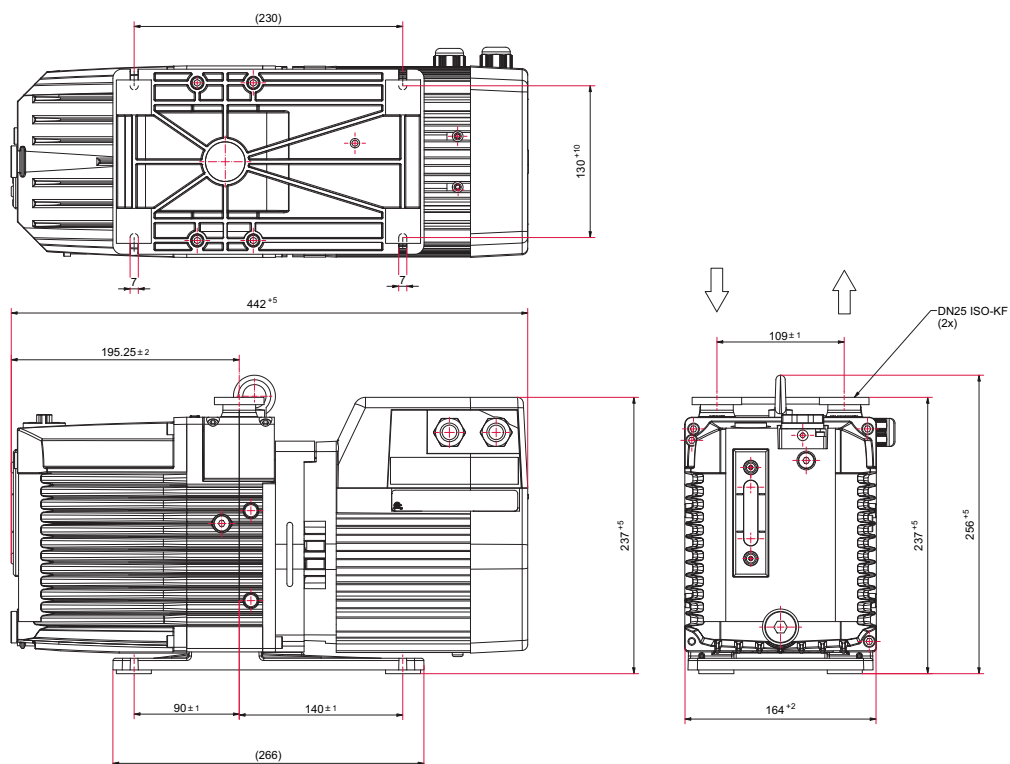


Fig. 30: Dimensions DuoVane 18 with three phase motor
Dimensions in mm

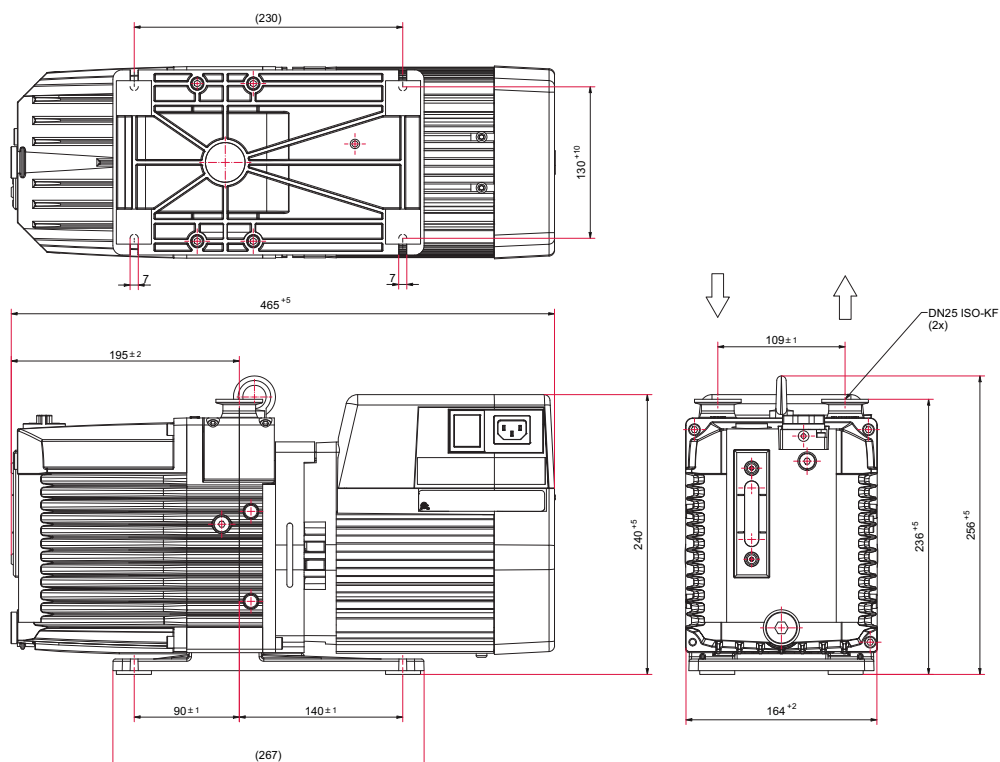


Fig. 31: Dimensions DuoVane 18 with single-phase motor
Dimensions in mm

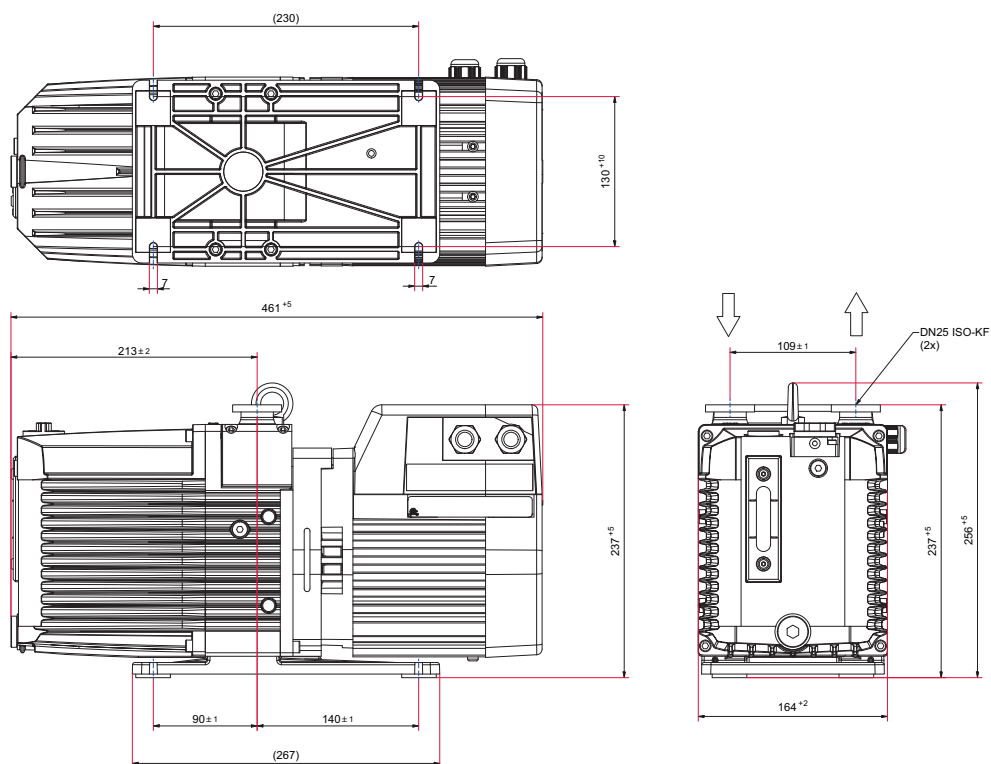


Fig. 32: Dimensions DuoVane 22 with three phase motor
Dimensions in mm

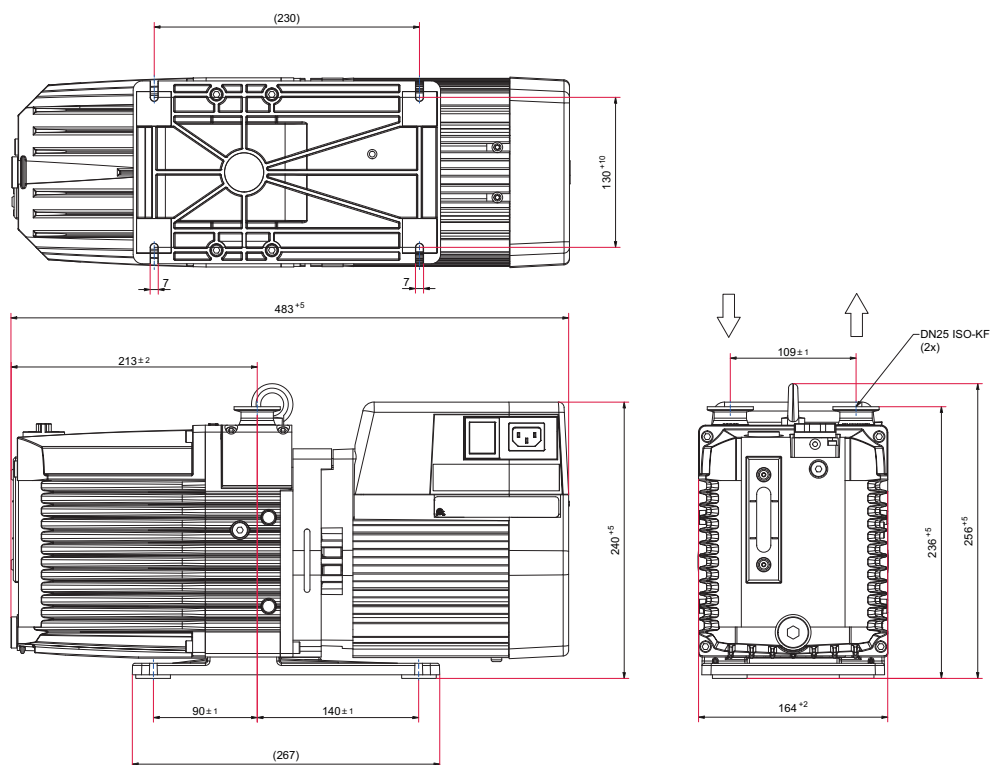


Fig. 33: Dimensions DuoVane 22 with single-phase motor
Dimensions in mm

EC Declaration of Conformity

This declaration of conformity has been issued under the sole responsibility of the manufacturer.

Declaration for product(s) of the type:

Rotary vane pump

DuoVane 6

DuoVane 12

DuoVane 18

DuoVane 22

We hereby declare that the listed product satisfies all relevant provisions of the following **European Directives**.

Machinery 2006/42/EC (Annex II, no. 1 A)

Electromagnetic compatibility 2014/30/EU

Restriction of the use of certain hazardous substances 2011/65/EU

Restriction of the use of certain hazardous substances, delegated directive 2015/863/EU

Harmonized standards and applied national standards and specifications:

DIN EN ISO 12100:2011

DIN EN 61010-1:2020

DIN EN 1012-2: 2011

DIN EN IEC 61000-6-2:2019

DIN EN ISO 13857:2020

DIN EN IEC 61000-6-4:2020

DIN ISO 21360-1:2016

DIN EN ISO 2151:2009

ISO 21360-2:2020

DIN EN IEC 63000:2019

The authorized representative for the compilation of technical documents is
Dr. Adrian Wirth, Pfeiffer Vacuum GmbH, Berliner Straße 43, 35614 Asslar, Germany.

Signature:



(Daniel Sälzer)
Managing Director

Pfeiffer Vacuum GmbH
Berliner Straße 43
35614 Asslar
Germany

Asslar, 2024-04-18



UK Declaration of Conformity

This declaration of conformity has been issued under the sole responsibility of the manufacturer.

Declaration for product(s) of the type:

Rotary vane pump

DuoVane 6

DuoVane 12

DuoVane 18

DuoVane 22

We hereby declare that the listed product satisfies all relevant provisions of the following **British Directives**.

Supply of Machinery (Safety) Regulations 2008

Electromagnetic Compatibility Regulations 2016

The Restriction of the Use of Certain Hazardous Substances in Electrical and Electronic Equipment Regulations 2012

Applied standards and specifications:

EN ISO 12100:2010 EN 61010-1:2010 + A1:2019 + A1:2019/AC:2019

EN 1012-2:1996+A1:2009 EN IEC 61000-6-2:2019

EN ISO 13857:2019 EN IEC 61000-6-4:2019

ISO 21360-1:2012 EN ISO 2151:2:2008

ISO 21360-2: 2012 EN IEC 63000:2018

The manufacturer's authorized representative in the United Kingdom and the authorized agent for compiling the technical documentation is Pfeiffer Vacuum Ltd, 16 Plover Close, Interchange Park, MK169PS Newport Pagnell.

Signature:



(Daniel Sälzer)
Managing Director

Pfeiffer Vacuum GmbH
Berliner Straße 43
35614 Asslar
Germany

Asslar, 2024-04-18

**UK
CA**



VACUUM SOLUTIONS FROM A SINGLE SOURCE

Pfeiffer Vacuum stands for innovative and custom vacuum solutions worldwide, technological perfection, competent advice and reliable service.

COMPLETE RANGE OF PRODUCTS

From a single component to complex systems:

We are the only supplier of vacuum technology that provides a complete product portfolio.

COMPETENCE IN THEORY AND PRACTICE

Benefit from our know-how and our portfolio of training opportunities!

We support you with your plant layout and provide first-class on-site service worldwide.

ed. B - Date 2408 - P/N:PD0118BEN



Are you looking for a
perfect vacuum solution?
Please contact us

Pfeiffer Vacuum GmbH
Headquarters • Germany
T +49 6441 802-0
info@pfeiffer-vacuum.de

www.pfeiffer-vacuum.com